

St. Mary's County Department of Recreation and Parks
ADA Transition Plan
and Site Analysis



Prepared by:
Christina Bishop, Project Manager

Approved: 
Raymond Bivens, Director

Review & Approval Date: 10/8/21, 5/10/22, 2/17/23, 9/27/2023

Review & Revision Date: 2/21/25

St. Mary's County Dept. of Recreation and Parks
23150 Leonard Hall Drive
Leonardtown, MD 20650
(301) 475-4200 ext. 1800

Table of Contents

ADA Overview	3
Departmental ADA History & Statements of Policy	4
Original Recreation and Parks ADA Policy.....	4
Statement of Policy: County Commissioners of St. Mary's County.....	4
Therapeutic Recreation Section Mission and Goals.....	5
Current Recreation and Parks ADA Policy.....	5
Self-evaluations and audits	6
Division Policies/Procedures and Program and Services Accessibility Self Evaluations.....	6
Recent and ongoing Existing Facility Site Access Audits.....	6
Inclusion and Accommodation Procedures	7
ADA Complaints.....	7
Follow up and Review.....	8
Plan Responsibility	8
Individual Park Site Audits	8
Cardinal Gibbons Park.....	9
Carver Heights Community Park.....	14
Cecil Park.....	17
Chancellors Run Regional Park.....	23
Chaptico Park.....	29
Southern Maryland BMX Track - leased from R&P.....	37
Dorsey Park.....	40
Elms Beach Park.....	47
Fifth District Park.....	48
Hollywood Recreation Center.....	58
Hollywood Soccer Complex- SMCPS PROPERTY.....	59
Jarobesville Park.....	64
John G. Lancaster Park.....	65
John Baggett Park at Laurel Grove.....	76
Laurel Ridge Park.....	84
Lexington Manor Passive Park.....	87
Miedenski Park.....	88
Myrtle Point Park.....	91
Nicolet Park.....	92
7th District Park.....	96
Shannon Farm.....	101
Snow Hill Park.....	102
St. Andrews Estates Park.....	103
St. Clements Shores Park.....	105
Town Creek Park.....	110
Wicomico Shores Park.....	112
Public Landings	115
Appendix 1: CIP FY25-30 PLAN	116

ADA Overview

The Americans with Disabilities Act (ADA) of 1990 is a civil rights law prohibiting discrimination based on a person's disability. There are five titles addressed that include: Title I (employment practices of private employers with 15 or more employees, state and local governments, employment agencies, labor unions, agents of the employer and joint management labor committees); Title II (programs and activities of state and local government entities); Title III (private entities that are considered places of public accommodation); Title IV Telecommunications and Title V Miscellaneous.

In accordance with 2010 final rule issued by the United States Department of Justice (DOJ), Part 35 Nondiscrimination on the Basis of Disability in State and Local Government Services, www.ada.gov/regs2010/titleII_2010/titleII_2010_regulations.htm, St. Mary's County Department of Recreation and Parks has created an ADA Transition Plan.

This plan contains the ADA history of the Department, the policies and procedures for inclusion and accommodations, and a description of the self-evaluations conducted. The plan outlines the accessibility concerns at each location and the proposed enhancements required to bring all parks in to full ADA compliance.

Any questions regarding the St. Mary's County Department of Recreation and Parks Transition plan, or park and facility accessibility should be directed to:

Christina Bishop, Project Manager
St. Mary's County Recreation and Parks
23150 Leonard Hall Drive, Leonardtown MD 20650
Christina.bishop@stmarysmd.com
301-475-4200 Ext. 1811

Any questions regarding the St. Mary's County Department of Recreation and Park's therapeutic services, inclusion and program accommodations should be directed to:

Crystal Haislip, Therapeutic Recreation Coordinator
St. Mary's County Recreation and Parks
23150 Leonard Hall Drive, Leonardtown MD 20650
Crystal.haislip@stmarysmd.com
301-475-4200 Ext. 1806

The Commissioners of St. Mary's County also have an ADA Coordinator to ensure the coordination of St. Mary's County's compliance with the ADA, including the investigation of any complaint alleging disability-based discrimination or lack of equal accessibility to county services, programs, or facilities. ADA Coordinator Contact Information:

ADA/FMLA Coordinator
St. Mary's County Government
23115 Leonard Hall Drive, Leonardtown, MD 20650-0653
301-475-4200 Ext. 1110

Departmental ADA History & Statements of Policy

In 1998, the Department of Recreation and Parks adopted an official ADA policy. This policy was developed and recommended by the Inclusion Study Group; which consisted of 15 members that included elected officials, department staff and citizen members.

Original Recreation and Parks ADA Policy

- “The presence of quality inclusive recreation and leisure activities in the community has a positive impact on all citizens in a number of ways.
- People with disabilities have opportunities to interact with, and learn from, others who do not have disabilities. Peer interaction and modeling helps them develop appropriate social skills, self-esteem and self-worth.
- People with disabilities learn to use a wide array of recreation and leisure options used by other people in the community, which increases their participation in recreation activities, thus developing higher levels of physical fitness and energy.
- Inclusive recreation options help people without disabilities learn that people, regardless of abilities, can participate if given an opportunity.
- People with and without disabilities, interacting successfully in age-appropriate recreation and leisure activities, develop skills and attitudes in live harmoniously in our increasingly diverse communities.

The Department Supports:

- Promotion recognition of the need for inclusive recreation and leisure activities as an essential component of quality life for people with disabilities.
- Encouraging organizations currently providing segregated recreation and leisure activities to develop inclusive options
- Developing strategies and techniques to help people with disabilities and their families make the transition to inclusive recreation and leisure activities, including competitive sports.
- Promotion participation of people with disabilities in organized recreational leisure groups that are appropriate for their chronological age. “

On July 13, 1999 the Commissioners of St. Mary’s County approved and adopted a new ADA Policy for County Government. Through the years the policy was streamlined and as of 2019 it reads:

Statement of Policy: County Commissioners of St. Mary's County

It is the policy of the Commissioners of St. Mary's County to ensure that, when viewed in their entirety, St. Mary's County Government services, programs, facilities, and communications are readily accessible and usable by qualified individuals with disabilities to the maximum extent possible. In compliance with the Americans with Disabilities Act of 1990 (ADA), no qualified individual with a disability shall, on the basis of disability, be excluded from participation in or be denied the benefits of the services, programs, or activities of St. Mary's County Government, or be subjected to discrimination in the provision of such services. www.stmarysmd.com/americandisabilities/adapolicy

On April 18, 2000, St. Mary’s County Department of Recreation and Parks adopted it’s first ADA Transition plan. A self-evaluation was conducted at each park and facility and a capital improvement plan was developed; priorities were placed on providing accessible playgrounds throughout the

county. It was approved in the FY2001 budget to add a new full time Therapeutic Recreation Specialist (TRS) position to aid the department in providing, guidance and training for staff and inclusion services for citizens; the position was filled in May of 2001. In 2001 the TRS developed the mission and the goals of the newly established Therapeutic Recreation Section.

www.stmarysmd.com/recreate/TR

Therapeutic Recreation Section Mission and Goals

The Department of Recreation and Parks is a strong advocate for people of all ability levels. The Department promotes and protects the rights and choices of individuals of all abilities. The Department believes that every individual, regardless of ability level, is deserving of satisfying recreational and leisure activities. With the combination of competent, qualified, professional staff and innovative programs, Recreation and Parks fosters independence and fulfillment by allowing for self-determination and personal choice.

Our goals:

- Recreation & Parks will assess the needs, desires and interests of the community through interviews, observations and surveys.
- Recreation & Parks will develop strategies and techniques to help individuals and their families make the transition to inclusive activities.
- Recreation & Parks will expand resources, which facilitate inclusive recreation and leisure activities.
- Recreation & Parks will make reasonable accommodations based on individual needs and requests.
- Recreation & Parks makes every effort to ensure that programs and services are accessible for all individuals.

In the following years numerous ADA improvements were made to the parks, including the prioritized playground projects, ADA signage, asphalt walkways and updated parking areas. In 2007, full transition plan review and audits were conducted to ensure all outline projects were completed.

In 2016 St. Mary's County Recreation and Parks adopted a new ADA Policy and Inclusion Guidelines <https://www.stmarysmd.com/docs/accommodationrequest.pdf>

Current Recreation and Parks ADA Policy

St. Mary's County Department of Recreation and Parks is a strong advocate for people of all ability levels. The Department promotes and protects the rights and choices of individuals and believes that every individual, regardless of ability level, is deserving of satisfying recreational and leisure activities. The Department is pleased to comply with the Americans with Disabilities Act regulations and makes every effort to ensure that facilities, programs, and services are accessible for all.

Minimum Requirements for Successful Program Inclusion

The basic eligibility requirements for all programs, camps, classes and events are listed below. These basic requirements apply to all participants, regardless of ability level. There may be additional requirements for each program, camp or class.

- The capacity for each program is based on ratio and logistics. If the maximum enrollment for a program has been met, a participant may be unable to enroll or placed on a wait list.
- Payment is due upon registration. Payments must be received before admission into any program.
- All participants are required to follow the rules of conduct in the parent handbook. An individual with a disability may be removed from a program if after interventions and accommodations their behavior is a direct threat to others.
- Must be able to maintain personal care without support of R&P staff or volunteers.
- Participants should meet the prerequisite age/skills for the class or program (if required for participation)
- Participant should be willing to participate and actively participate in the program most of the time.
- Ability to function with or without assistance as a member of a larger group (10 or more people)

Self-evaluations and audits

Division Policies/Procedures and Program and Services Accessibility Self Evaluations

In 2017, as requested by the County ADA Coordinator, the Recreation Division and Parks Division completed self-evaluations of their programs, services and activities and their policies and procedures to determine accessibility to people with disabilities. In 2018 these same self-evaluations were completed by the Golf and Museums Divisions. Employees can find copies of the completed evaluations on the shared drive: ADA/Stage 1: Program and Services and ADA/Stage 2: policies and procedures.

Recent and ongoing Existing Facility Site Access Audits

In 2017, St. Mary's County Recreation and Parks began to re-inspect existing parks with new self-assessment audit inspections. Concentration was given to Priority 1, 2 and 3 areas in the parks and to complete inspections of all public landings. All assessments were complete in 2018. A document indicating accessible features at Public Landings was developed and published online at: <https://www.stmarysmd.com/recreate/publiclandings> Full inspection reports are found on the shared drive: ADA/ADA Inspections. All buildings and facilities fall under St. Mary's County Governments ADA Transition Plan and is the responsibility of the County ADA Coordinator.

In 2017, the Department continued to grow the Therapeutic Recreation Section with the hiring of the first hourly Inclusion Specialist. This position's main function is to identify the needs and accommodations of individuals enrolled in any Recreation and Parks programs and provide individualized accommodation plans and staff training.

In 2018 and 2019, a full self-assessment for all remaining amenities and services surveyed and the transition plans were developed. On May 17, 2019 the updated ADA Transition Plan was finalized. All access issues and solutions have been developed and staff is prioritizing projects to incorporate them into the Capital Improvement Projects budget and incorporated in the Recreation and Parks Master Plan.

During 2020/2021 site audits were again conducted and the ADA Transition plan was revised in a new format to include photos of all the individual access issues and to document completed projects.

Inclusion and Accommodation Procedures

For citizens to request accommodations, individuals with disabilities are encouraged to register for general recreation programs. Citizens need to indicate the need for accommodations on their registration form and include information regarding the disability and type of accommodation needed. A two-week notice is required for the Department to make reasonable accommodations based on individual needs for successful inclusion. Every registration form for recreational programs includes a space for the request of accommodations and all online registrations will prompt the customer to answer if accommodations are needed for participation.

For Golf, Museums or Parks Divisions to receive inclusion assistance for accommodations and modifications, the respective Division Manager will consult with the Therapeutic Recreation Coordinator (TRC).

The Recreation Division will contact the Therapeutic Recreation Coordinator when a new citizen is enrolled in their program that is requesting accommodations. To have accommodations updated, staff will contact the TRS:

- When major aggressive behavior leads to injury.
- BEFORE behaviors result in suspension.
- When strategies to change behavior are failing.
- When accommodation plans are failing.

This is done by completing a TR consultation request form and attaching any relevant documentation (see stages of Inclusion chart for flow charts on the stages of identification and program placement and the stages of program inclusion on the shared drive at: Recreation Division/TR/Inclusion/Stages of Inclusion Chart)

ADA Complaints

ADA Complaints Any citizen with an accessibility or discrimination concern in one of St. Mary's County programs or services are encouraged to contact Crystal Haislip, Therapeutic Recreation Coordinator for resolution: crystal.haislip@stmarysmc.com or by calling 301-475-4200 ext. 1806.

Any citizen with an accessibility or discrimination concern in one of St. Mary's County parks or facilities are encouraged to contact Christina Bishop, Project Manager for resolution: christina.bishop@stmarysmc.com or by calling 301-475-4200 ext. 1811.

Those that wish to file a formal complaint can do so through St. Mary's County Governments ADA Grievance Procedure. Please submit complaints regarding access or discrimination in writing, using

the County Grievance Form to the ADA Coordinator no later than 60 days after the alleged violation. The ADA Coordinator will keep a record of all complaints and action taken.
www.stmarysmd.com/AmericanDisabilities/adacoordinator

Follow up and Review

To maintain future compliance with the Americans with Disabilities Act, the Commissioners of St. Mary's County's ADA policy and the Recreation and Parks official ADA Policy, the Department of Recreation and Parks will:

- Always require full ADA compliance from contracted consultants in the planning and or engineering of any capital improvement project.
- Conduct regular ADA inspections of parks, facilities, programs and/or services and update transition plans whenever any renovations, upgrades or improvements are completed.
- Complete site Audit Reviews are conducted on a biennial basis.
- Maintain a fulltime Therapeutic Recreation Specialist to provide consultation to the Department on ADA guidelines, inclusion services and training to ensure the full participation of individuals with disabilities in all programs and services.
- Maintain guides, tips and inspection templates on the Recreation and Parks shared drive under ADA Documents.

Maintain documentation of any assessments and inspections both in writing and electronically on the Recreation and Parks shared drive ADA Documents.

Plan Responsibility

It is the responsibility of the Recreation and Parks ADA Coordinator/Project Manager to maintain and update the ADA Transition plan and conduct site audits. It is the responsibility of the Director to budget projects in the Capital Improvement Budget annually and the Parks Manger to schedule and manage the individual upgrade projects.

NOTE: All project recommendations are contingent upon sufficient appropriations and approvals provided by the appropriate authority.

Individual Park Site Audits

The following pages are the working documents addressing ADA access issues and solution completion plans.

Cardinal Gibbons Park

SMCR&P ADA Site Audit Report – 16924 St. Peter Claver Road St. Inigoes, MD 20684

Date updated: 9/27/23

Reviewer: Christina Bishop



Location: Small pavilion by playground

Access issue: Two picnic tables provided; only one is ADA

Recommendation: Replace regular table with ADA Table

Target Date: FY28



Location: Playground surfacing

Access issue: The surfacing is deteriorated and uneven with large gaps around the concrete

Recommendation: Replace surfacing

Target Date: FY23



Location: Basketball Courts

Access issue: The right court only has access by cutting across the left.

Recommendation: Add paved access route to right side courts from main path

Target Date: FY22



Location: Baseball field #2

Access issue: No access paths to team seating areas or accessible area at team bench.

Recommendation: Add paved access route to both dugouts and add accessible pad next to bench.

Target Date: FY28 – accessible team bench; FY22 access paths



Location: Tables next to field #2

Access issue: Two picnic tables provided; neither are ADA; nor are they on an access path.

Recommendation: Replace tables with ADA Tables and add paved access path and pad area.

Target Date: FY28



Location: Monument

Access issue: No access path leading to or from monument.

Recommendation: Add paved access route to monument from main path

Target Date: FY28



Location: Baseball field #3

Access issue: No access paths to team seating areas or accessible area at team bench.

Recommendation: Add paved access route to both dugouts and add accessible pad next to bench.

Target Date: FY28 – accessible team benches; FY22 access paths



Location: Accessible pathways

Access issue: Access paths throughout the park are damaged, crack with grass and debris on them.

Recommendation: Clean and repair all access paths.

Target Date: FY22



Location: Baseball field #1

Access issue: No access paths to team seating areas or accessible area at team bench.

Recommendation: Add paved access route to both dugouts and add accessible pad next to bench.

Target Date: FY28- accessible dugouts; FY22 access paths

Carver Heights Community Park

SMCR&P ADA Site Audit Report – 4238 Lincoln Ave Lexington Park MD 20653

Date

updated: 6/4/2021

Reviewer: Christina Bishop



Location: Parking by playground

Access issue: 18 spaces provided; one accessible van parking spot available with no sign provided. Space is located very far from amenities.

Recommendation: Move accessible parking close to playground; add a sign and new curb cut.

Target Date: FY28



Location: Playground Surfacing

Access issue: The wood fiber surfacing has grass growing throughout the area and is extremely low in fill causing lips to accessible entries.

Recommendation: Remove all grass and debris, add additional wood fiber fill and maintain regularly.

Target Date: FY28



Location: Access path to fields from playground

Access issue: The accessible route from playground area to fields ends after bridge.

Recommendation: continue pathway to connect to access path at fields or post sign in parking area for accessible entrance to fields use parking are located on Rt 235.

Target Date: FY24



Location: Baseball field #1

Access issue: No access paths to team seating areas or accessible area at team bench.

Recommendation: Add paved access route to both dugouts and add accessible pad next to bench.

Target Date: FY24



Location: Baseball field #2

Access issue: No access paths to team seating areas or accessible area at team bench.

Recommendation: Add paved access route to both dugouts and add accessible pad next to bench.

Target Date: FY24



Location: Accessible pathways

Access issue: Access paths throughout the park are damaged, cracked with grass and debris on them.

Recommendation: Clean and repair all access paths.

Target Date: FY24

Cecil Park

SMCR&P ADA Site Audit Report – 19241 St Georges Church Rd, Valley Lee, MD 20692

Date updated: 2/17/23

Reviewer: Christina Bishop



Location:

Stand alone picnic tables and grills by pavilion & under pavilion

Access issue: 14 tables under pavilion/none ADA; stand alone tables and grills are not ADA and not on access path.

Recommendation: Replace 3 tables under the pavilion with ADA tables, add access path and pad to one of the two grills and tables and replace table with ADA table.

Target Date: FY27

Tables under pavilion



COMPLETE FY22
Location: Picnic tables connected to pavilion by access path

Access issue: Two tables provided only one ADA and only one on access path. Table is blocking accessible access to grill area.

Recommendation: Re place accessible table to allow space for grill access. Add access path from existing pathway to 2nd table and replace table with ADA table.

Target Date: FY27



COMPLETE FY23

Location: Baseball field #4

Access issue: No access paths to team seating areas or accessible area at team bench.

Recommendation: Add paved access route to both dugouts and add accessible pad next to bench.

Target Date: FY27



Location: Spectators Bleachers by Field 4

Access issue: No access path to bleacher and no accessible seating pad next to them.

Recommendation: Add access path from existing pathway to bleachers and add accessible seating pad next to them.

Target Date: FY27



Location: Pitching practice area by Field 4

Access issue: No access path to mound or plate.

Recommendation: Add access path from existing pathway to mound and plate areas.

Target Date: FY27



Location: Tennis Courts

Access issue: Existing access path only connects to the closest court requiring citizens to cross through one court to get to the others.

Recommendation: Add access path from existing pathway down the center of both court areas to mid court. Add new gates to enter courts on both from mid court.

Target Date: FY27



Location: Teeball Field #3

Access issue: No access paths to team seating areas or accessible area at team bench.

Recommendation: Add paved access route to both dugouts and add accessible pad next to bench.

Target Date: FY27

Location: Multipurpose field



Access issue: Spectator and team benches are not located on an access path and do not have accessible pad.

Recommendation: Add access path from existing pathway to team seating area and add accessible pad for players at each bench. Move spectator seating to access path and add accessible pad for spectators.

Target Date: FY27



Location: Baseball Field #2

Access issue: No access paths to team seating area on 3rd base side or accessible area at team bench.

Recommendation: Add paved access route to 3rd base side dugout and add accessible pad next to bench.

Target Date: FY27

COMPLETE FY23



Location: Picnic table by field 2

Access issue: No ADA table located in grass with no access path.

Recommendation: Replace picnic table with ADA table and add access path and pad to area.

Target Date: FY27



Location: Baseball Field #1

Access issue: No access paths to team seating area or accessible area at team bench.

Recommendation: Add paved access route to both dugouts and add accessible pad next to bench.

Target Date: FY27

COMPLETE FY23

Chancellors Run Regional Park

SMCR&P ADA Site Audit Report 21905 Chancellors Run Rd, Great Mills MD 20634

Date updated: 1/4/2023

Reviewer: Christina Bishop



Location: Multipurpose #1

Access issue: No accessible route to fields and player seating, no accessible pad at players benches

Recommendation: Add asphalt pathway to team benches and pad at each bench

Target Date: FY22

COMPLETE FY22



Location: Multipurpose #3

Access issue: No accessible route to fields and player seating, no accessible pad at players benches

Recommendation: Add asphalt pathway to team benches and pad at each bench

COMPLETE FY22

Target Date: FY22



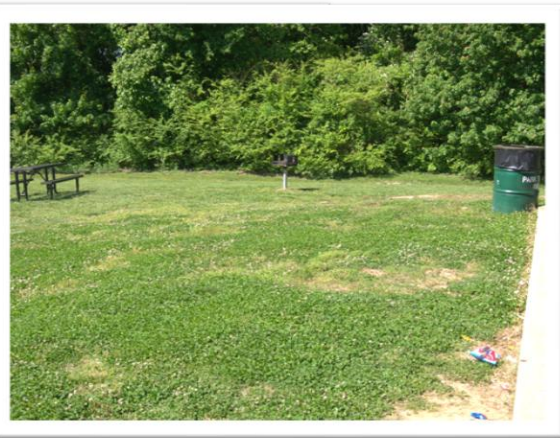
Location: Tennis Courts

Access issue: No accessible route to both courts

Recommendation: Extend asphalt pathway to left side of courts to minor court and add a new entrance gate.

Target Date: FY22

COMPLETE FY22



Location: Tables and grills by pavilion

Access issue: No accessible route to tables & grills; 1 non ADA table and 2 grills

Recommendation: Add asphalt pathway to a minimum of 1 grill and tables. Switch out these two tables for ADA tables

Target Date: FY22

COMPLETE FY22



Location: Accessible parking by basketball courts, Field 1&2 and 3&4

Access issue: No accessible route from parking to access path to fields. Both directions must cross a speed bump to get to crosswalk/path

Recommendation: Add access pathway to/from accessible parking area at cross hatch for van spot to access path leading to fields.

Target Date: FY22

COMPLETE FY22



Location: Basketball courts

Access issue: No accessible route to court and no accessible spectator seating at bleachers

Recommendation: Extend asphalt pathway to right side of courts to mid court and add paved spectator pad

Target Date: FY22

COMPLETE FY22



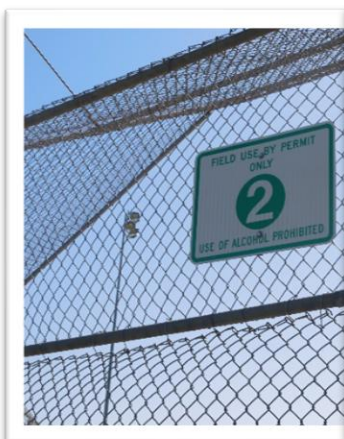
Location: Volleyball courts

Access issue: No accessible route to far court

Recommendation: Extend asphalt pathway along the side of courts to mid court

Target Date: FY22

COMPLETE FY22



Location: Baseball #2

Access issue: No accessible team seating at bench

Recommendation: add accessible ramp next to both team benches OR shorten benches to allow a 36 inch pad next to the bench

Target Date: FY22

COMPLETE FY22



Location: Baseball #3

Access issue: No accessible team seating at bench

Recommendation: add accessible pad next to both team benches OR shorten benches to allow a 36 inch pad next to the bench.

Target Date: FY22

COMPLETE FY22



Location: Baseball #4

Access issue: No accessible team seating at bench

Recommendation: add accessible pad next to both team benches OR shorten benches to allow a 36 inch pad next to the bench.

Target Date: FY22

COMPLETE FY22



Location: Batting Cages

Access issue: No accessible route from sidewalk to entrance of cages, no consistent accessible path inside of cages.

Recommendation: Extend accessible path from sidewalk to entrance, add additional mat surfacing inside gates for one continuous accessible surface

Target Date: FY22

COMPLETE FY22

Area	Access Issue	Solution	Target Date	Date of completion
Baseball #1	NO accessible route to 3 rd base side dugout	Add accessible dugout	FY2021	FY 21
Soccer #2	No accessible spectator seating; No access route to team seating or accessible team seating area	Need accessible seating: one next to each bleacher;	FY2021	FY21
Soccer #4	No accessible spectator seating; No access route to team seating or accessible team seating area	Need accessible seating: one next to each bleacher;	FY2021	FY21

Chaptico Park

SMCR&P ADA Site Audit Report – 26600 Buds Creek Rd, Mechanicsville MD 20659

Date updated: 4/13/23

Reviewer: Christina Bishop

	Access Issue	Solution	Target Date	Date completed
1 Now purpose field 1	No ADA Team seating; no access path to team benches, trash cans on spectator pad	Add access path to team seating areas and add ADA Team seating space; remove cans for pad	FY2021	FY2021
2 Now purpose field 2	No ADA Team seating; no access path to team benches	Add access path to team seating areas and add ADA Team seating space	FY2021	FY2021



Location: Multipurpose Field #3

Access issue: No ADA Team seating; no access path to team benches

Recommendation: Add access path to team seating areas and add ADA Team seating space

Target Date: FY23



Location: *Multipurpose #4* **Access issue:** No ADA Team seating; no access path to team benches; Benches at spectator area all bunched together, blocked by trash cans and located on access path.

Recommendation: Add access path to team seating areas and add ADA Team seating space; relocate trash cans, move spectator benches off access path and allow enough space for accessible spectator pad for both benches.

Target Date: FY23



Location: Multipurpose Field #5

Access issue: No ADA Team seating; no access path to team benches; Benches at spectator area all bunched together, blocked by trash can and located on access path.

Recommendation: Add access path to team seating areas and add ADA Team seating space; relocate trash cans, move spectator benches off access path and allow enough space for accessible spectator pad for both benches.

Target Date: FY23

COMPLETE FY23



*Location:
Multipurpose
Field #6*

Access issue: No ADA Team seating; no access path to team benches

Recommendation:

Add access path to team seating areas and add ADA Team seating space

Target Date: FY23

COMPLETE FY23



Location: Multipurpose Field #7

Access issue: No ADA Team seating, no access path to team benches, benches at spectator area all bunched together, blocked by trash cans and matted in access path. Access path to spectator seating has large cracks and grass growing in it.

Recommendation: Add access path to team seating areas and add ADA Team seating space; relocate trash cans, move spectator benches off access path and allow enough space for accessible spectator pad for both benches. Fix access path

Target Date: FY23

COMPLETE FY23



Location: Multipurpose Field #8

Access issue: No ADA Team seating; no access path to team benches; benches at spectator area all bunched together, blocked by trash cans and located on access path. Access path to spectator seating is covered in sand and dirt.

Recommendation: Add access path to team seating areas and add ADA Team seating space; relocate trash cans, move spectator benches off access path and allow enough space for accessible spectator pad for both benches. Clear access path

COMPLETE FY23

Target Date: FY23



Location: Multipurpose Field #9

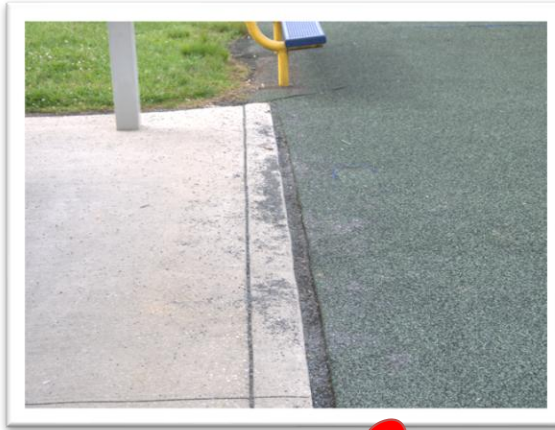
Access issue: No ADA Team seating; no access path to team benches; benches at spectator area all bunched together, blocked by trash cans and located on access path. Access path has large cracks and grass growing.



COMPLETE FY23

Recommendation: Add access path to team seating areas and add ADA Team seating space; relocate trash cans, move spectator benches off access path and allow enough space for accessible spectator pad for both benches. Repair access path

Target Date: FY23



Location: Pavilion in Playground

Access issue: Two picnic tables provided; one ADA Table. Playground surfacing separating from concrete pavilion pad

Recommendation: Replace non ADA table with ADA compliant table; fill surface area between concrete pad and playground surface to have one continuous surface material

Target Date: FY22; **Table Project COMPLETE FY22**

COMPLETE FY23



Location: Picnic area by restrooms

Access issue: Five picnic tables provided; none are ADA Tables and none are on access path.

Recommendation: Replace 2 non ADA table with ADA compliant tables and move to access path with access pad

Target Date: FY22

COMPLETE FY22



Location: Access path behind restrooms

Access issue: Access path has sunken down leaving manhole covers protruding into path

Recommendation: Repair and fill in access path to level manhole covers to path surface

Target Date: FY23

COMPLETE FY23

Southern Maryland BMX Track - leased from R&P



Location: Parking area

Access issue: Accessible parking area does not connect to track area via access pathway

Recommendation: Relocate accessible parking near opening in fence and add asphalt access path to track area

Target Date: FY31



Location: Spectator and seating areas

Access issue: No accessible tables or spectator seating provided. No access paths provided to any areas.

Recommendation: Add access path to all spectator and dining areas; add accessible spectator pad to each set of bleachers; replace two picnic tables with accessible tables

Target Date: FY31



Location: Access Path to concession stand

Access issue: Pavilion poles and table block access to concession building.

Recommendation: Remove and relocate tables or extend asphalt on side of poles.

Target Date: FY31



Location: Concession windows

Access issue: No clear floor space in front of concession window

Recommendation: Remove temporary tables

Target Date: FY31



Location: Water fountain

Access issue: Pavilion poles and table block access to concession building.

Recommendation: Remove and relocate tables or extend asphalt on side of poles.

Target Date: FY31

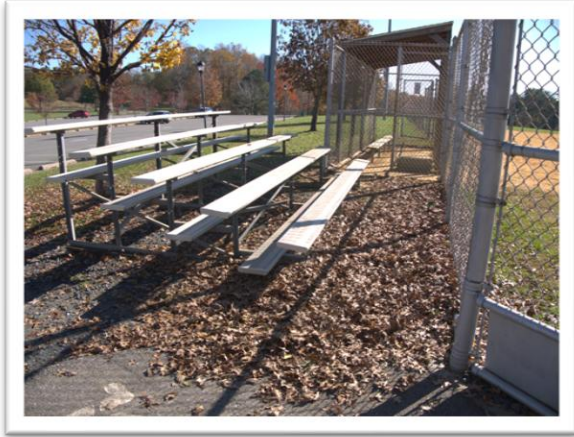
Dorsey Park

SMCR&P ADA Site Audit Report Dorsey Park

2/17/23

Reviewer: Christina Bishop

Date updated:



Location: Baseball 1

Access issue: no accessible entrance to field; no wheelchair seating at either team bench, only one bleacher area has wheelchair seating area

Recommendation: Add accessible team seating at both benches and marked accessible seating at spectator areas

Target Date: FY2025

COMPLETE FY23



Location: Baseball 2

Access issue: no accessible entrance to field; no wheelchair seating at either team bench or bleacher seating area.

Recommendation: Add accessible team seating at both benches and marked accessible seating at spectator areas

Target Date: FY2025

COMPLETE FY23



Location: Baseball 3

Access issue: No accessible entrance to field; no wheelchair seating at either team bench.

Recommendation: Add accessible team seating at both benches and access path and entrance into team area

Target Date: FY2025

COMPLETE FY23



Location: Volleyball

Access issue: No access route; grass surfacing

Recommendation: Add paved accessible route to amenity

Target Date: FY2025



Location: Horseshoe pits

Access issue: No access route; grass surfacing

Recommendation: Add paved accessible route to amenity

Target Date: FY2025



Location: Tennis Courts

Access issue: Need accessible route to second side of court

Recommendation: Add paved accessible route to opposite side of court

Target Date: FY2025



Location: Batting cages

Access issue: No accessible route or pad inside cages

Recommendation: Add paved accessible route to amenity

Target Date: FY2025



Location: Basketball

Access issue: no accessible path to courts

Recommendation: Add accessible route to amenity

Target Date: FY2025



Location: Large Pavilion by playground

Access issue: Not enough ADA tables; check slope of path from upper parking

Recommendation: Remove 3 tables and replace with ADA tables

Target Date: FY2022



Location: Small Pavilion

Access issue: Not enough ADA tables

Recommendation: Remove 2 tables and replace with ADA tables

Target Date: FY2022



Location: Grills

Access issue: No grills are located on an access route nor are they on a accessible pad

Recommendation: Add paved access route to grills and paved pad around grill area.

Target Date: FY2025



Location: Multipurpose Field

Access issue: No accessible route or accessible pad at team benches.

Recommendation: Add paved access route to benches and paved pad at each bench.

Target Date: FY2023



Location: Multipurpose Field by concessions

Access issue: No accessible route or accessible pad at spectator benches.

Recommendation: Add paved access route to benches or more to access path close by and add paved pad at each bench.

Target Date: FY2025

COMPLETE FY23

Elms Beach Park

Date: 2/17/23

Design and Engineering awarded in FY23, planning to start March 2023. Construction planned for FY24 and will address ADA Access issues at the time of renovation. This is a largely undeveloped park and there are terrain and resource protection issues as limiting factors.

Fifth District Park

SMCR&P ADA Site Audit Report – 37880 New Market Turner Rd, Mechanicsville MD
20659 Date updated: 2/17/23

Reviewer: Christina Bishop



Location: Lighted field 2

Access issue: No access path to team seating area or pad at team bench

Recommendation: continue asphalt pathway to team bench and pour pad for accessible seating.

Target Date: FY2026



Location: Lighted field 2

Access issue: No access path to visitors' side of field, team seating area or spectator seating area or accessible seating area at either

Recommendation: continue asphalt pathway to bleachers and team bench and pour pad for accessible seating in both locations.

Target Date: FY2026



Location: Lighted field 3

Access issue: No access path to visitors’ side of field, team seating area or spectator seating area or accessible seating area at either

Recommendation: continue asphalt pathway to bleachers and team bench and pour pad for accessible seating in both locations.

Target Date: FY2026

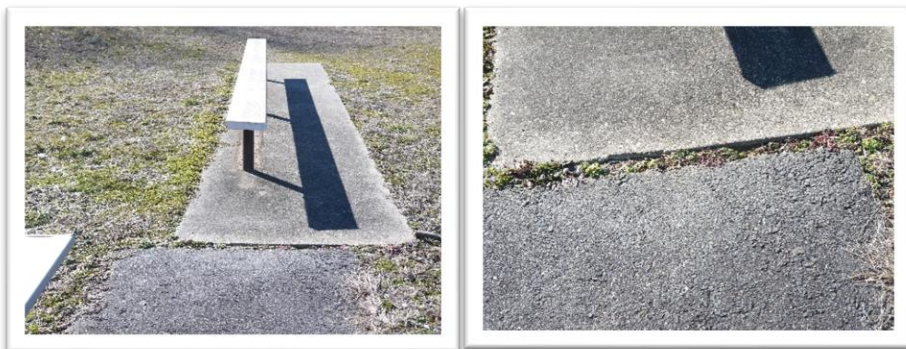
Location: Lighted field 3- asphalt pathways

Access issue: Severe damage to access path including cracks, wash out and debris

Recommendation: remove all debris and dirt and resurface all damaged areas

Target Date:

FY2026



Location: Lighted field 3

Access issue: Large break in access path at team bench and no accessible seating

Recommendation: Repair crack and add accessible team seating pad

Target Date: FY2026



Location: *Picnic table and grills next to Pavilion*

Access issue: Neither table or any of the grills are accessible by access path, table is not ADA.

Recommendation: continue asphalt pathway to picnic areas include a connected pad at each grill and table. Replace picnic table with ADA table and ensure access path goes to pad area under table.

Target Date: FY2026



Location: *Horseshoe pits next to Pavilion*

Access issue: No access path to either side of the horseshoe pits.

Recommendation: continue asphalt pathway each side of the horseshoe pit throwing areas from main access route.

Target Date: FY2026



Location: *Pavilion*

Access issue: 15 tables with 2 ADA tables

Recommendation: Replace one regular table with ADA table for total of 3

Target Date: FY2022



Location: *Bench next to Pavilion*

Access issue: Not connected to access path and no accessible seating area next to it.

Recommendation: continue asphalt path and pad directly next to bench.

Target Date: FY2026



Location: *Volleyball*

Access issue: Not connected to access path.

Recommendation: Continue asphalt path to playing area.

Target Date: FY2026



Location: *Tennis courts*

Access issue: Not connected to access path on both sides requiring crossing of the courts to access both the far court.

Recommendation: continue asphalt path to entrance.

Target Date: FY2026



Location: Tennis courts pathway

Access issue: severe damage including large cracks and wash outs to access path

Recommendation: Repair all damaged areas

Target Date: FY2026



Location: field 3 parking

Access issue: Access path does not connect to accessible parking requiring individuals to travel through traffic area.

Recommendation: Add access path from access aisle of parking to crosswalk

Target Date: FY2026



Location: *field 3 Spectator Seating*

Access issue: Bleachers placed on top of access path, blocking access to accessible seating pad area.

Recommendation: Move bleachers off access pad onto grass area against the fence.

Target Date: FY2026



Location: *Baseball Field 11 by brick bathroom house*

Access issue: Slope of access path too steep

Recommendation: Re-engineer pathway to meet standard 1:12.

Target Date: FY2026



Location: *Baseball Field 11 by brick bathroom house*

Access issue: No ADA Access to team benches due to benches opening from field side AND no

COMPLETE FY23

accessible seating inside team area

Recommendation: Add entrance on field side with access path and accessible team bench area.

Target Date: FY2026



Location: *Baseball Field 11 by brick bathroom house*

Access issue: Accessible viewing area next to bleachers damaged

Recommendation: Repair cracks in asphalt.

Target Date: FY2026

Location: *Access path from Baseball Field 11-9*



Access issue: Access path is damaged with cracks larger than ¼'

Recommendation: Repair cracks in asphalt.

Target Date: FY2026



Location: *Baseball Field 9*

Access issue: No ADA Access to team benches due to benches opening from field side AND no accessible seating inside team area

Recommendation: Add entrance on field side with access path and accessible team bench area.

Target Date: FY2026

Location: Baseball Field 5 school property



Access issue: No access pathway to field, bleachers or team seating and no accessible spectator or team areas.

Recommendation: Continue asphalt pathway to bleachers and team bench and pour pad for accessible seating in both locations.

Target Date: FY2026

Location: Access path from Baseball Field 9 to Football 10



Access issue: Access path is damaged with cracks larger than ¼' and covered in debris

Recommendation: Repair cracks in asphalt and clear debris

Target Date: FY2026



Location: Batting Cages

Access issue: No access path to batting cage entrance

Recommendation: Continue asphalt pathway to batting cage entrance.

Target Date: FY2026



Location:
Baseball Field 12

Access issue: No ADA Access to team benches due to benches opening from field side AND no accessible seating inside team area

Recommendation: Add entrance on field side with access path and accessible team bench area.

Target Date: FY2026

COMPLETE FY23



Location: lighted Braves field

Access issue: No access pathway to visitor side of the field, bleachers or team seating and no accessible spectator or team areas.

Recommendation: continue asphalt pathway to bleachers and team bench and pour pad for accessible seating in both locations.

Target Date: FY2026

5th District PARKING

Area	Access Issue	Solution
Rt Side of Park - Parking along right side of road by playground	Must cross roadway to enter another parking area; Not enough access. parking	needs 2 spots, one Van and 1 ADA
Right side of Park Field 1& 2 lot	Not enough access. parking	Need one additional ADA for total of 5
Parking along right side of road by heading to field 1 and 2	Must cross roadway to enter another parking area; Not enough access. parking	need 2 spots, 1 ADA and 1 van
Big Lot by baseball fields/bathho use	Need 6 spots total	add additional 2 ADA
Big Lot by Multipurpose field (lighted)	Not enough accessible parking	Need additional 1 ADA spot

Hollywood Recreation Center

SMCR&P ADA Site Audit Report: 24400 Mervell Dean Rd, Hollywood MD 20636

Date updated: 2/17/23

Reviewer: Christina Bishop



Location: Parking

Access issue: No Paved or marked accessible parking and no accessible path from parking area to field area.

Recommendation: Add ADA compliant park spot and asphalt path to field viewing area.

Target Date: FY2023



Location: Team seating

Access issue: No accessible path to team seating area NOR accessible space at team bench.

Recommendation: Add asphalt path to team seating areas and a pad by benches.

Target Date: FY2025

Hollywood Soccer Complex- SMCPs PROPERTY

SMCR&P ADA Site Audit Report – Joy Chapel Lane, Hollywood MD 20636

Date

updated: 3/15/2021

Reviewer: Christina Bishop

Location: Field 5/6 & 3/4 Access path



Access issue: Large breaks in asphalt more than 1/4'

Recommendation: Repair asphalt

Target Date: FY2029



Location: Field 5 Team seating

Access issue: No accessible path to team seating AND no accessible space at team benches

Recommendation: Continue asphalt path to player benches and add accessible space at each.

Target Date: FY2029



Location: Field 5/6 spectator seating

Access issue: No accessible path to second set of spectator seating AND no accessible space at the same.

Recommendation: Continue asphalt path to second set of benches and add accessible spectator viewing area.

Target Date: FY2029



Location: Field 6 Team seating

Access issue: No accessible path to team seating AND no accessible space at team benches

Recommendation: Continue asphalt path to player benches and add accessible space at each.

Target Date: FY2029



Location: Field 4 Team seating

Access issue: No accessible path to team seating AND no accessible space at team benches

Recommendation: Continue asphalt path to player benches and add accessible space at each.

Target Date: FY2029



Location: Field 4 spectator seating

Access issue: No accessible path to second set of spectator seating AND no accessible space at the same.

Recommendation: Continue asphalt path to second set of benches and add accessible spectator viewing area.

Target Date: FY2029



Location: Field 3 Team seating- NEED NEW PIC

Access issue: No accessible path to team seating AND no accessible space at team benches

Recommendation: Continue asphalt path to player benches and add accessible space at each.

Target Date: FY2029



Location: *Field 3 spectator seating*

Access issue: No accessible pad at both sets of spectator seating

Recommendation: Add asphalt pad at both bleachers

Target Date: FY2029



Location: *Field 2 Team seating*

Access issue: No accessible path to team seating AND no accessible space at team benches

Recommendation: Continue asphalt path to player benches and add accessible space at each.

Target Date: FY2029



Location: *Field 2 spectator seating*

Access issue: No accessible pad at both sets of spectator seating

Recommendation: Add asphalt pad at both bleachers

Target Date: FY2029



Location: Field 1 Team & Spectator seating

Access issue: No accessible path to team seating OR spectator seating AND no accessible space at team benches or spectator seating

Recommendation: Continue asphalt path to player benches and bleachers and add accessible space at each.

Target Date: FY2029

Jarobesville Park

SMCR&P ADA Site Audit Report 46760 Thomas Dr. Lexington Park MD 20653

Date updated: 5/14/2021

Reviewer: Christina Bishop



Location:
Baseball field

Access issue: No access path to the 3rd base team seating area and no access pad at bench.

Recommendation:
Extend access path to team seating area and include an asphalt pad next to bench

Target Date: FY25

]

John G. Lancaster Park

SMCR&P ADA Site Audit Report – 21550 Willows Rd, Lexington Park MD 20653

Date updated: 2/17/23

Reviewer: Christina Bishop



Location: Dog Park entrance

Access issue: Accessible path damaged and does not continue past the entrance gate.

Recommendation: Repair asphalt and pave inside the two gates.

Target Date: FY24



Location: Dog Park (Small dog area)

Access issue: Accessible path does not continue to bench area.

Recommendation: Add accessible path from entrance to bench area and add pad next to bench for companion seating.

Target Date: FY24



Location: Dog Park (Large dog area)

Access issue: Accessible path does not continue to picnic table area. Two tables provided neither are ADA tables.

Recommendation: Add accessible path from entrance to picnic area. Replace both tables with ADA tables.

Target Date: FY24



Location: Field #6

Access issue: No access path or accessible spectator seating to or near the bleachers. No Accessible parking near this area.

Recommendation: Add accessible path from curb cut in parking lot to bleachers and add pad next to bleachers for accessible spectator seating area. Add accessible parking space and access aisle that connects to new access path to bleachers.

Target Date: FY24



Location: Field #5

Access issue: No accessible path to team areas

Recommendation: Add accessible to team seating areas

Target Date: FY24

COMPLETE FY22



Location: Batting cages

Access issue: No accessible path to batting cages.

Recommendation: Add accessible path to entrance of batting cage

Target Date: FY24

COMPLETE FY22



*Location: In between #4 and #5
behind restrooms*

Access issue: No accessible path to table/non ADA table

Recommendation: pour asphalt pad off the current access path and replace table with ADA table

Target Date: FY24



Location: Field #4

Access issue: Access path has large splits with grass growing in them and doors.

Recommendation: Remove and clean path and fill in splits

Target Date: FY24



Location: Field #4 and #5 Parking

Access issue: Accessible parking does not connect to an accessible path of travel and requires travel over a speed bump.

Recommendation: Add access aisle to each parking area and install curb cuts and accessible path to current access path.

Target Date: FY24

COMPLETE FY22



Location: Accessible Parking by Pavilion

Access issue: Access path from access aisle is damaged covered in dirt and too steep a slope.

Recommendation: Remove current path, fix slope and lay new asphalt.

Target Date: FY24

COMPLETE FY23



Location: Field #3

Access issue: No access path or accessible spectator seating to or near the bleachers.

Recommendation: Add accessible path from current accessible path to bleachers and add pad next to bleachers for accessible spectator seating area.

Target Date: FY24



Location: Field #2

Access issue: No access path or accessible spectator seating to or near the bleachers. Non ADA Picnic table in grass area.

Recommendation: Add accessible path from curb cut in parking lot to bleachers and add pad next to bleachers for accessible spectator seating area. Replace picnic table with ADA table and add an asphalt path and pad at table.

Target Date: FY24



Location: Basketball

Access issue: No access path to either court

Recommendation: Add accessible path from existing path to each court area.

Target Date: FY24



Location: Bench By Basketball

Access issue: No access path to bench or pad next to bench for companion seating.

Recommendation: Add accessible path from existing path to bench and add a pad next to the bench.

Target Date: FY24



Location: Field #1

Access issue: No access path to spectator seating on parking lot side of field nor on endzone seating area. Two picnic tables in endzone, neither are ADA. No access path to team seating area or accessible team seating.

Recommendation: Add accessible path to all spectator areas and team seating area. Add accessible seating area next to team benches and spectator benches. Replace both picnic tables with ADA tables.

Target Date: FY24

COMPLETE FY24





Location: Playground picnic tables & bench

Access issue: No access path or pad by bench. Four picnic tables by and under pavilion, none are ADA.

Recommendation: Add path to bench and a accessible seating area next to it. Replace both tables under the pavilion with ADA tables.



Target Date: FY22



Location: Concession window by playground

Access issue: Height to the bottom of the window is 42"; maximum height of window cannot exceed 36"

Recommendation: Must provide auxiliary counter nearby until window height can be adjusted.

Target Date: FY24

Area	Access Issue	Solution	Target Date	Date of completion
Picnic tables	PAVILION AREA TABLES: 8 total tables/1 ADA Need one more.	Switch out one table under pavilion with ADA table	FY2022	FY2021
Parking	<p>3. Playground - All ADA spots blocked off for use :(</p> <p>4. Field #2- 35 total down side of field NO ADA COMPLETE FY23</p> <p>5. Field #6 34 spots - 1 reg...NEED one van</p> <p>6. Baseball #3 total 54 spots (both sides of lot) 2 reg. ADA spots one does not have sign... need sign and van space</p> <p>7. Dog park lot area- (Alongside of dog park and pavilion) 34 spots, 2 van and 2 ADA- ONE ADA spot by dog park has no curb cut</p> <p>8. Field #5 - 46 total spots... 1 ADA spot and it has no access from spot to access path without crossing a speed bump. RELOCATE existing space and add van space</p> <p>9 NEW PARKING/NEW ENTRANCE- total 120 space/ 4 van spaces provided - NEED 1 ADA spot</p>	<p>3. add additional spots near playground</p> <p>4. Add one van and one regular ADA spot</p> <p>5. Field #6 Add one van spot</p> <p>6. Add additional van spot and add sign to regular space that is missing.</p> <p>7. Remove spot or add curb cut</p> <p>8. Relocate current ADA spot and add additional Van space</p> <p>9 Add additional ADA space</p>	FY2000	

John Baggett Park at Laurel Grove

SMCR&P ADA Site Audit Report – 26929 Three Notch Rd, Mechanicsville MD 20659

Date updated: 4/13/23

Reviewer: Christina Bishop



*Location: Baseball Field #1, #2, #3
& #4*

Access issue: No marked accessible spectator seating

Recommendation: Paint area designated for accessible seating

Target Date: FY23

COMPLETE FY23



*Location: Baseball Field #1, #2, #3
& #4*

Access issue: No marked accessible team seating

Recommendation: Paint area designated for accessible seating

Target Date: FY23

COMPLETE FY23



Location: Field #4

Access issue: Spectator bench protrudes too far into access path

Recommendation: Relocate the benches to allow for clear space area

Target Date: FY23

COMPLETE FY23



Location: Basketball Court

Access issue: Cross Slope

Recommendation: Measure cross slope; if more than 1.50, level

Target Date: FY23

COMPLETE FY23



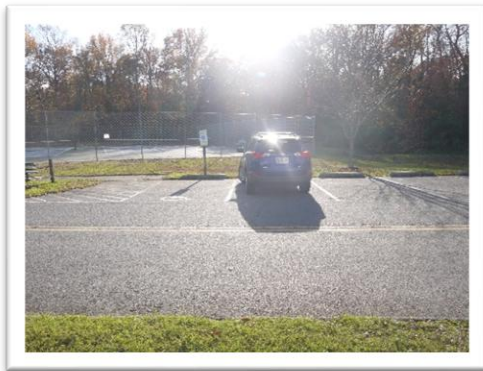
Location: Basketball Court

Access issue: No access route or accessible seating area at bench

Recommendation: Add asphalt path to bench and add pad next to bench

Target Date: FY23

COMPLETE FY23



Location: Parking by Tennis Courts

Access issue: Only one van accessible spot available

Recommendation: Add additional regular car accessible parking spot but courts.

Target Date: FY23

COMPLETE FY23



Location: Tennis Court

Access issue: No accessible seating area at bench

Recommendation: Add asphalt pad next to bench connected to path

Target Date: FY23

COMPLETE FY23



Location: Bike rack by field #1

Access issue: No accessible access path to bike rack

Recommendation: Add asphalt path to rack and put pad under rack or move to an access path/walk area.

Target Date: FY23

Rack damaged and removed fy23



Location: Pavilion by field #1

Access issue: Only one of the two tables is ADA

Recommendation: Replace non-ADA table with accessible table. Rule no less than 2

Target Date: FY23



Location: Horseshoe Pits

Access issue: No ADA access to throwing pad at throwing areas

Recommendation: Add access path and throwing pad to both sides.

Target Date: FY23



Location: Trail

Access issue: No ADA Access path to trail area

Recommendation: Add access path.

Target Date: FY23



Location: Pavilion by playground

Access issue: 6 tables provided, none ADA

Recommendation: remove two tables and replace with three accessible tables

Target Date: FY23

COMPLETE FY23



Location: Water Access at Playground pavilion

Access issue: No ADA access path or pad at water pump

Recommendation: Add access path and pad.

Target Date: FY23

COMPLETE FY23



*Location: Grill Access at
Playground pavilion*

Access issue: No ADA Access path or pad
at grill

Recommendation: Add access path and
pad.

Target Date: FY23

Grill removed



Location: Batting Cages

Access issue: No ADA Access path to
batting cages

Recommendation: Add access path.

Target Date: FY23

COMPLETE FY23



Location: Parking by 3 Notch Trail Head

Access issue: No ADA Parking near trail head

Recommendation: Add regular and van accessible parking and access path to walkway by trail head.

Target Date: FY23

COMPLETE FY23



Location: Multipurpose field

Access issue: No ADA Access path to area from parking

Recommendation: Add access path.

Target Date: FY23

COMPLETE FY23

Laurel Ridge Park

SMCR&P ADA Site Audit Report – Laurel Ridge Park
12/16/2020

Date updated:

Reviewer: Christina Bishop



Location: Portable Toilet

Access issue: Not on accessible access route from Park or amenities

Recommendation: Move toilet next to accessible parking and access route to fields

Target Date: FY30



Location: Team Seating Area

Access issue: No access path to benches and no accessible seating area at benches.

Recommendation: Extend asphalt path to benches pour a pad next to each bench for seating.

Target Date: FY30



Location: Spectator Seating

Access issue: No accessible path to seating and no access path

Recommendation: Extend asphalt path to benches pour a pad next to bench for seating.

Target Date: FY30



Location: Access to Multipurpose Field

Access issue: No accessible path connecting to multipurpose field in rear of park.

Recommendation: extend asphalt path to multipurpose field area.

Target Date: FY30

Lexington Manor Passive Park

21728 South Coral Drive, Lexington Park MD 20653

Date Updated 2/17/22

This property is currently under construction per the Master Plan and all amenities will be ADA compliant.

COMPLETE FY23

Miedenski Park

SMCR&P ADA Site Audit Report — 23115 Leonard Hall Dr, Leonardtown MD 20650

Date

updated: 11/9/2020

Reviewer: Christina Bishop

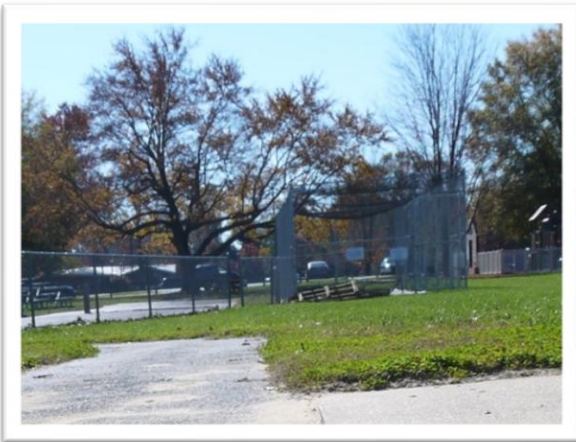


Location: Baseball field #1

Access issue: No access pathway to team seating area and no accessible team seating - located across the street from the MSP Barracks.

Recommendation: Install asphalt walkway from sidewalk to right side of team bench area. Shorten team bench to allow for accessible area OR enlarge entire gated team area adding access pad inside of gated area.

Target Date: FY 2030



Location: Batting Cages

Access issue: No access path from fence opening to batting cages

Recommendation: Add hard surface access path from fence opening to batting cage opening

Target Date: FY 2030



Location: Access Pathway to baseball field

Access issue: Access pathway is cracked, uneven and covered in debris

Recommendation: Clean and resurface pathway ensuring concrete pad under team seating and asphalt walkway are even.

Target Date: FY 2030



Location: Spectator seating by Recreation Center Entrance

Access issue: No access path to seating area & no accessible pad by either bleacher

Recommendation: Move bleachers to paved area OR bump up to paved area and add one access pad to each set of bleachers

Target Date: FY 2030



Location: Picnic tables under tree

Access issue: Neither table is ADA compliant and neither are connected by an access path or on hard surface pad

Recommendation: Replace both tables with ADA complaint tables and add access path and pad under each table.

Target Date: FY 2030



Location: Picnic tables on left side of playground/Governmental Center Lawn

Access issue: Only one table is ADA compliant and neither are connected by an access path or on hard surface pad.

Recommendation: Replace non ADA table with ADA complaint tables and add access path and

pad under each table.

Target Date: FY 2030

Myrtle Point Park

Date Updated: 3/15/2019

Master Planning, design and engineering is budgeted for Fiscal Year 2020 and will address ADA Access issues.

Nicolet Park

SMCR&P ADA Site Audit Report – 21770 FDR Blvd, Lexington Park MD 20653

Date updated: 6/4/2021

Reviewer: Christina Bishop

Area	Access Issue	Solution	Date of completion
Parking	Not adequate Van or ADA spaces provided	IN lot by spray park need one additional van spot; in lots by basketball need to make one accessible space a van space. In lots by skate park, one of the 2 accessible spaces needs to be a van space.	
Pavilion	Pavilion at Spray park has 8 tables and only 1 accessible table, need another;	Add a minimum of one accessible table COMPLETED	FY20



Location: Benches throughout park along access path

Access issue: Most benches are located on the access path but fail to offer an accessible companion seating pad next to them.

Recommendation: Move benches NOT on access path along existing path and add accessible companion seating pad to at least 20% of benches.

Target Date: FY 29



Location: Spectator seating at baseball field

Access issue: No accessible route to bleachers and no accessible spectator pad provided.

Recommendation: Add accessible route and pad to bleachers.

Target Date: FY29



Location: Accessible pathways

Access issue: Access paths throughout the park are damaged, cracked with grass and debris on them.

Recommendation: Clean and repair all access paths.

Target Date: FY29



Location: Baseball Field

Access issue: No accessible route to the 3rd base side team seating; no accessible team seating on either side

Recommendation: Add access path to 3rd base team seating and add accessible team seating area to both team benches.

Target Date: FY29



Location: Basketball Courts

Access issue: No accessible route to both courts, making citizens cross the court to access the far court

Recommendation: Add access path to other side of the courts

Target Date: FY29



Location: Spectator seating at Skatepark

Access issue: No accessible route to bleachers and no accessible spectator pad provided.

Recommendation: Add accessible route and pad to bleachers.

Target Date: FY29



Location: Picnic tables inside skatepark

Access issue: 2 tables provided, neither are ADA.

Recommendation: Replace both tables with ADA tables.

Target Date: FY29

7th District Park

SMCR&P ADA Site Audit Report – 7th District Park

2/17/23

Reviewer: Christina Bishop

Date updated:



Location: Field #1

Access issue: No ADA team seating, no access path to team benches, trash cans on ADA spectator Pad

Recommendation: Add access path to both team benches and an access pad next to each for wheelchair access.

Target Date: FY30

COMPLETE FY23



Location: Field #1 Parking to Picnic area

Access issue: No crosswalk

Recommendation: Add crosswalk from ADA Parking to picnic area

Target Date: FY30



Location: Picnic area

Access issue: Two tables provided and only one is ADA; grill is not on access path

Recommendation: Replace non ADA table and add pad next to grill

Target Date: FY30



Location: Picnic area

Access issue: Access path is cracked and raised.

Recommendation: Repair path

Target Date: FY30



Location: Field #2

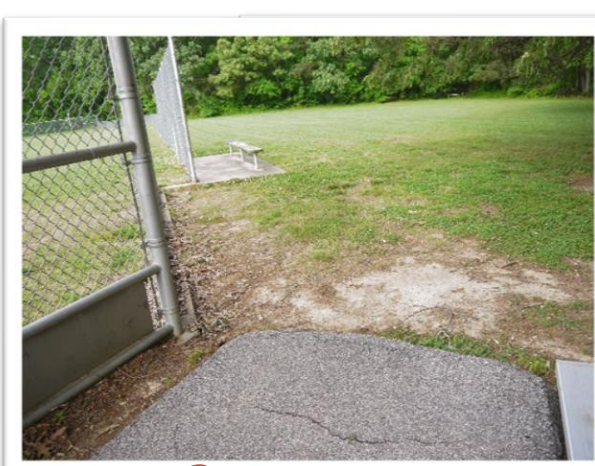
Access issue: No crosswalk

Access issue: No ADA team seating, no access path to team benches, trash cans on ADA spectator Pad

Recommendation: Add access path to both team benches and an access pad next to each for wheelchair access.

Target Date: FY30

COMPLETE FY23



Location: Field #3

Access issue: No ADA team seating, no access path to team benches, trash cans on ADA spectator Pad

Recommendation: Add access path to both team benches and an access pad next to each for wheelchair access.

Target Date: FY30

COMPLETE FY23



Location: Picnic Tables by concession stand

Access issue: Two tables provided, neither ADA tables. No clear maneuverable space or access aisle.

Recommendation: Remove both tables. Replace with one ADA Table towards wall to allow for 36 inches of travel path.

Target Date: FY30



Location: Picnic Tables by concession stand

Access issue: Two tables provided, neither ADA tables. No clear maneuverable space or access aisle and tables block concession window

Recommendation: Remove both tables. Replace with one ADA Table towards wall to allow for 36 inches of travel path.

Target Date: FY30



Location: *Tennis Court*

Access issue: Access path only connects one side of the court and there is a pole directly in front of the entrance gate.

Recommendation: Remove pole and fill hole; add access path to opposite side of the court.

Target Date: FY23



Location: *Picnic Tables by concession stand*

Access issue: Two tables provided, only one is an ADA table.

Recommendation: Replace non ADA table

Target Date: FY30

Shannon Farm

21078 Three Notch Rd, Lexington Park MD 20653

Date Updated: 2/17/23

This property is undeveloped, and Master Planning was completed in FY23 all proposed amenities will be ADA Compliant. Construction planned for FY25

Snow Hill Park

26590 South Sandgates Rd, Mechanicsville MD 20659

Date Updated: 2/17/23

This property is undeveloped, and Master Planning begun in FY2020 and all proposed amenities will be ADA Compliant.

St. Andrews Estates Park

SMCR&P ADA Site Audit Report – 44110 St. Andrews Ln, California MD 2069

Date updated: 11/9/2020

Reviewer: Christina Bishop



Location: Bike Rack

Access issue: No ADA access path to bike rack or pad at bike rack

Recommendation: Add asphalt access path to bike rack and add pad.

Target Date: FY27



Location: Baseball field

Access issue: No ADA team seating area

Recommendation: Add asphalt pad to each team seating area connected to access path.

Target Date: FY27



Location: Spectator seating

Access issue: No marked ADA pad at spectator seating and trash cans placed in the way.

Recommendation: Move trash cans and mark asphalt.

Target Date: FY27

St. Clements Shores Park

SMCR&P ADA Site Audit Report – 22300 Meadow Ln, Leonardtown MD 20650

Date updated: 11/9/2020

Reviewer: Christina Bishop



Location: *Parking area by entrance*

Access issue: No access path from accessible parking to any amenity

Recommendation: Add asphalt pathway to playground

Target Date: FY29



Location: *Grill*

Access issue: Access pad blocked by trash cans

Recommendation: Move trash cans

Target Date: FY29



Location: Benches around playground area

Access issue: No access path or ADA pad next to benches

Recommendation: Add asphalt pathway to (2) playground benches and pad at all 3.

Target Date: FY29



Location: Baseball field #1

Access issue: No ADA Access path to team seating areas and no ADA seating at team benches

Recommendation: Extend asphalt access path to both team benches and add ADA pad to team seating

Target Date: FY29



Location: *Spectator seating at Field #1*

Access issue: Access path blocked by trash cans

Recommendation: Move trash cans

Target Date: FY29



Location: *Baseball field #2*

Access issue: No ADA Access path to team seating areas and no ADA seating at team benches

Recommendation: Extend asphalt access path to both team benches and add ADA pad to team seating

Target Date: FY29



Location: Spectator seating at Field #2

Access issue: Access path blocked by trash cans

Recommendation: Move trash cans

Target Date: FY29



Location: Pavilion at Field #3

Access issue: 6 tables provided, 0 are ADA

Recommendation: Replace 2 tables with ADA tables

Target Date: FY29



Location: Baseball field #2

Access issue: No ADA Access pad at team seating areas

Recommendation: Add ADA pad to team seating

Target Date: FY29



Location: Spectator seating at Field #3

Access issue: Access path blocked by trash cans

Recommendation: Move trash cans

Target Date: FY29

Town Creek Park

SMCR&P ADA Site Audit Report -45805 Dent Drive Lexington Park MD 20653

Date updated: 6/21/2021

Reviewer: Christina Bishop



Location: Tennis courts

Access issue: There is no ADA access path to both courts, requiring you to cross one court to get to the other side.

Recommendation: Add access pathway to mid court.

NOTE: due to drainage areas directly at midcourt on both sides, path may not be exactly center of both courts or maybe technically infeasible.

Target Date: FY30



Location: Bench by tennis courts

Access issue: There is no ADA access path to bench and no pad next to it for companion seating.

Recommendation: Add access pathway and pad to bench area.

Target Date: FY 30

Wicomico Shores Park

SMCR&P ADA Site Audit Report – 25222 Army Navy Dr. Mechanicsville MD 20659

Date updated: 6/21/2021

Reviewer: Christina Bishop



Location: Bench by waterfront

Access issue: There is no ADA access path to the bench area NOR is there a pad next to it for companion seating.

Recommendation: Add access path and pad

Target Date: FY30



Location: Bike Rack

Access issue: There is no ADA access path to the area

Recommendation: Add access path

Target Date: FY30



Location: Horseshoe Pits

Access issue: There is no ADA access path to the play areas

Recommendation: Add access path to both sides of the pits

Target Date: FY30



Location: Tables by waterfront

Access issue: There are 3 tables by the waterfront, two are not on access path and are not ADA tables.

Recommendation: Add access path to at least one more table AND switch table with ADA table.

Target Date: FY30



Location: Tables under pavilion


Access issue: There are 3 tables and none of the tables are ADA tables.

Recommendation: Replace 2 picnic tables with ADA tables.


Target Date: FY30

Public Landings

St. Mary's County has access to a variety of waterways that are suitable for many kinds of recreational boating. There are fifteen County-operated launches that can be used for motorized and non-motorized vessels, depending on the individual site.

Landing Location	Boat Slip	Pier	Boat Launch	Boarding Pier	Floating Docks	Picnic table	Charcoal Grill	Portable Toilets	Toilet seasonal	Paved parking	Additional Comments
											Amenities with the  are ADA Compliant
Abell's Wharf 21620 Abell's Wharf Road, Leonardtown Rt. 5 to Rt. 244 to Abell's Wharf Road, Leonardtown			♿	♿	♿				♿	♿	
Bushwood Wharf 36803 Bushwood Wharf Road, Bushwood Rt. 242 to end of Rt. 239, Bushwood		♿	♿	♿	♿			♿		♿	
Camp Calvert Landing 22530 Camp Calvert Road, Leonardtown Rt. 5, end of Camp Calvert Road, Leonardtown						★				★	Canoe/kayak launching only Minimal Parking
Chaptico Wharf 23975 Old Chaptico Wharf Road, Rt. 234 to Rt. 238 to end of Chaptico Wharf Road, Maddox		♿	♿	♿	♿	♿		♿		♿	
Clarke's Landing 45417 Clarke's Landing Road, Hollywood Rt. 235 to end of Clarke's Landing Road,			♿	♿	♿					♿	Minimal parking
Forest Landing 44600 Forest Landing Road, Hollywood Rt. 235 to Sotterley Rd. to Forest Landing Road			♿	♿	♿			♿		♿	
Fox Harbor Landing 16490 Dunbar Lane, Ridge Rt. 5 to Rt. 235, to Fox Harbor Rd to end of Dunbar Lane, Wynne		♿			♿						Minimal Parking
Great Mills Canoe/Kayak Launch 20228 Point Lookout Road, Great Mills Rt. 5 in Great Mills (near Post Office)			★			★				♿	Canoe/kayak launching only
Paul Ellis Landing 37385 Paul Ellis Road, Avenue Rt. 242, end of Paul Ellis Road, Avenue		♿			♿						Minimal parking
Piney Point Landing 17139 Piney Point Road, Piney Point Rt. 5 to Rt. 249, before the St. George's Island Bridge		♿	♿	★	♿	♿		♿		♿	
River Springs Landing 37250 River Springs Road, Avenue Rt. 242, end of River Springs Road, Avenue		♿			♿						Minimal parking
St. George's Island Landing 16036 Thomas Road, St. George's Island Rt. 5, Thomas Road, St. George's Island		♿			♿						Canoe/kayak launching only Minimal Parking
St. Inigoes Landing 46621 Beachville Road, St. Inigoes MD Rt. 5 to end of Beachville Road, South of St. Inigoes			♿	♿	♿	♿			♿	♿	
Tall Timbers Landing 18521 Herring Creek Road, Tall Timbers Rt. 5 to Rt. 249, end of Tall Timbers Road, Tall Timbers		♿			♿						Minimal Parking
Wicomico Shores Landing 35222 Army-Navy Drive, Mechanicsville Rt. 234 to Aviation Yacht Club Road, turn right on Army Navy Drive, continue to end	★	♿	★	♿	♿	♿	♿	♿		♿	Restroom Building open April 1– Oct 31st Portable toilet available Nov. 1– March 31st NOTE: access to Floating Dock/Platform is on boat launch and may partially exceed slope requirements.

Appendix 1: CIP FY25-30 PLAN

Project Title Rec Facility & Parks Improvements	Project Number RP-2503	Classification Recreation and Parks
Project Description This project addresses capital improvements at existing recreation facilities and parks. FY2025 Projects include: COURT IMPROVEMENTS: 7th District Tennis Courts (\$150,000) PLAYGROUNDS: 7th District (\$350,000) and Chaptico Park (\$350,000); ADA TRANSITION PLAN: Dorsey Park and Jarboesville Park (\$100,000); ASPHALT OVERLAY: Three Notch Trail (\$200,000); PARK LIGHTS: 5th District Poles (\$20,000) SNOW HILL MAINTENANCE SHED: (\$50,000) RECREATION FACILITY UPGRADES: (\$150,000) PARKING LOTS LANCASTER (\$100,000); WICOMICO - irrigation, driving range, green improvements and fairway restoration (\$150,000) WICOMICO SHORES LANDING-Pavilion roof replacement (\$20,000)		 <p data-bbox="805 730 1518 835"> Compliance With Comprehensive Plan Section 10.2.2 D Create new and enhanced facilities to provide recreational opportunities while preserving environmental, aesthetic, and cultural quality. P.10-5 </p>
Discussion of Operating Budget Impact		

Appropriation Phase	Total Project	Prior Approval	Budget	5-Year Capital Plan					Balance to Complete
			FY2025	FY2026	FY2027	FY2028	FY2029	FY2030	
Park Lights	620,000		20,000			200,000	200,000	200,000	
Court Improvements	550,000		150,000	150,000	100,000	100,000	100,000	50,000	
Playgrounds	2,350,000	250,000	700,000	700,000				700,000	
ADA Transition Plan	1,200,000	100,000	100,000	100,000	200,000	200,000	200,000	200,000	300,000
Asphalt Overlay	1,250,000	150,000	200,000	200,000	200,000	200,000	200,000	100,000	200,000
Recreation Facility Upgrades	1,100,000	100,000	150,000	150,000	300,000	300,000	300,000	100,000	
Wicomico Shores Golf Course	800,000	50,000	150,000	150,000	150,000	150,000	150,000	150,000	
Chaptico Park & Nicolet Skate Parks	850,000	850,000							
Athletic Field Fencing	550,000			100,000	200,000	200,000	50,000		
Parking Lot overlay and striping	1,000,000	100,000	100,000	100,000	300,000	300,000	100,000		
Retrofit Field Athletic Lights	450,000	450,000							
Park Improvements POS	6,600,000	600,000	1,000,000	1,000,000	1,000,000	1,000,000	1,000,000	1,000,000	1,000,000
Wicomico Shores Pavilion Roof Replacement	30,000		30,000						
Snow Hill Maintenance Barn	50,000		50,000						
TOTAL COSTS	17,400,000	2,650,000	2,650,000	2,650,000	2,650,000	2,650,000	2,650,000	2,650,000	1,500,000

Funding Schedule

BONDS	7,545,235	1,650,000	1,079,047	1,079,047	1,079,047	1,079,047	1,079,047	500,000	
PAY-GO									
EXCISE TAX - PARKS	2,854,765		570,953	570,953	570,953	570,953	570,953		
STATE FUNDS	7,000,000	1,000,000	1,000,000	1,000,000	1,000,000	1,000,000	1,000,000	1,000,000	
TOTAL FUNDS	17,400,000	2,650,000	2,650,000	2,650,000	2,650,000	2,650,000	2,650,000	2,650,000	1,500,000

Operating Impacts

	FY2025	FY2026	FY2027	FY2028	FY2029	FY2030
STAFFING -FTEs						
TOTAL COSTS						