



Commissioners of St. Mary's County Meeting
October 8, 2024

Comprehensive Plan Update

THE CLARION TEAM

CLARION

BURNS MCDONNELL



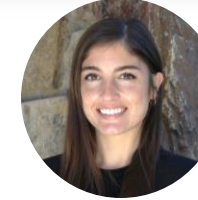
LEIGH ANNE KING, AICP
DIRECTOR AND PROJECT MANAGER



GORDY MOORE
PROJECT COORDINATOR



CHRISTIAN SCHMIDT, AICP
PROJECT PLANNER



ADDIE SHERMAN
PLAN GRAPHICS



ANGELINE CROWDER, AICP
SECTION MANAGER, LAND USE PLANNER,
LOCAL GOVERNMENT COORDINATOR



WILL TUCKER, AICP
SENIOR LAND USE
PLANNER



SARAH LOTHMAN, PE PMP
PROJECT MANAGER



JULIE RATCLIFFE
PUBLIC INVOLVEMENT
SPECIALIST



WILL ALLEN
ENVIRONMENTAL RESILIENCY
AND WORKING LANDS PLANNING



JAMIE CHRISTENSEN
ENVIRONMENTAL RESILIENCY
AND WORKING LANDS PLANNING

Team Roles

CLARION



- **Project Management**
- **Meeting Facilitation**
- **Public Engagement**
- **Technical Analyses**
sociodemographics, land use and character, economic development, historic and cultural heritage
- **Policy & Plan Development**
land use, economic development/tourism, housing

BURNS MEDONNELL

- **Technical Analyses**
current and future transportation system, public facilities and services
- **Policy & Plan Development**
transportation and infrastructure policies, strategies, and actions with a focus on the linkage to land use
- **Public Engagement Assistance**



- **Technical Analyses**
environmental conditions, current sustainability policies and initiatives, areas of critical state concern, agricultural lands
- **Plan Development**
conservation of environmental lands, rural open spaces, and working lands, community vulnerability to climate and non-climate related hazards with a focus on linkage to land use

Comprehensive Plan Update

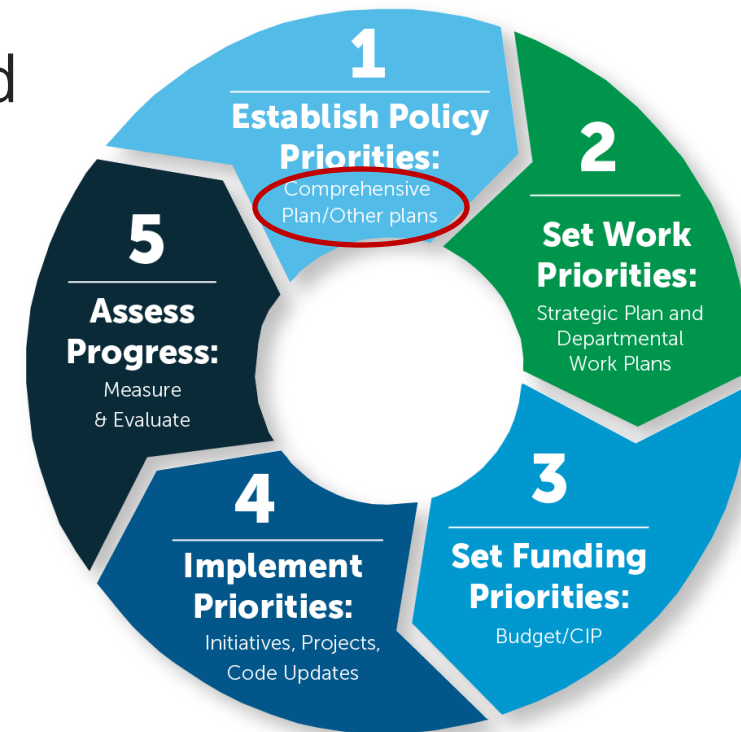


ST. MARY'S 2050
CHARTING OUR TOMORROW

*Updating the St. Mary's County
Comprehensive Plan (2010)*

About the Comprehensive Plan

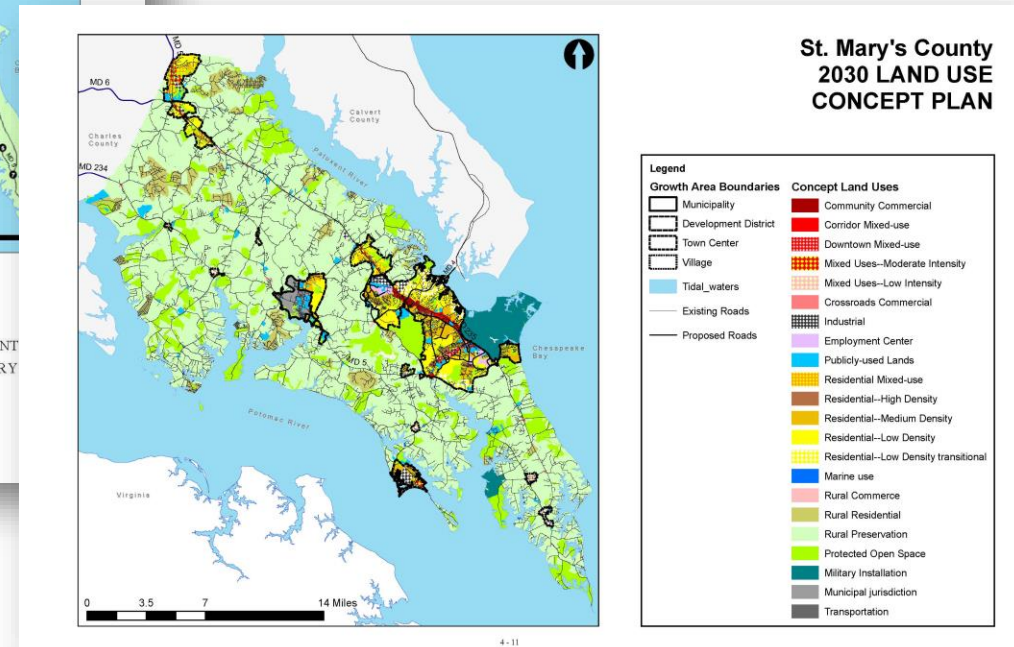
- Required by Title 3 of the Land Use Article
- Long-range (20+ years) **policy guidance** focused on physical planning (land use, conservation, infrastructure)
- **Built from inclusive public engagement**
- **Guide to direct growth and support preservation** efforts
- **Implemented** through updates to Comprehensive Zoning Ordinance
- Updated every 10 years



Community Planning Cycle

Currently Adopted Comprehensive Plan (2010)

- Trends
- Successes and Challenges
- Vision and Strategy
- Growth Management Element
- Resource Protection Element
- Priority Preservation Areas Element
- Water Resources Element
- Housing Element
- Economic Development Element
- Community Facilities Element
- Transportation Element
- Human Services Element



Project Timeline



Community Engagement Strategy



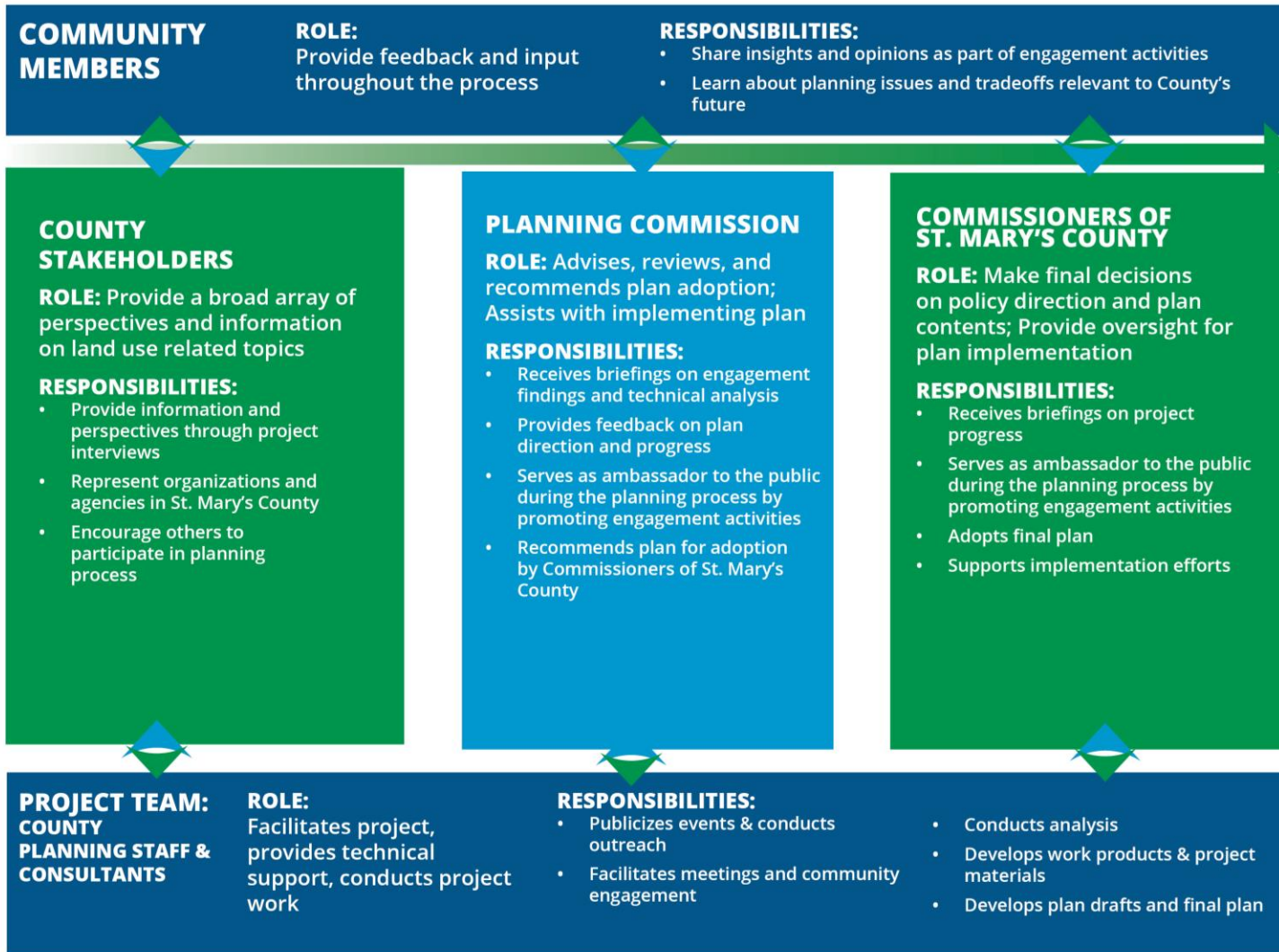
Community Engagement Strategy



Community
Engagement
Team



Roles and Responsibilities





Questions?