

1

COMPREHENSIVE PLANNING IS THE LAW IN MARYLAND

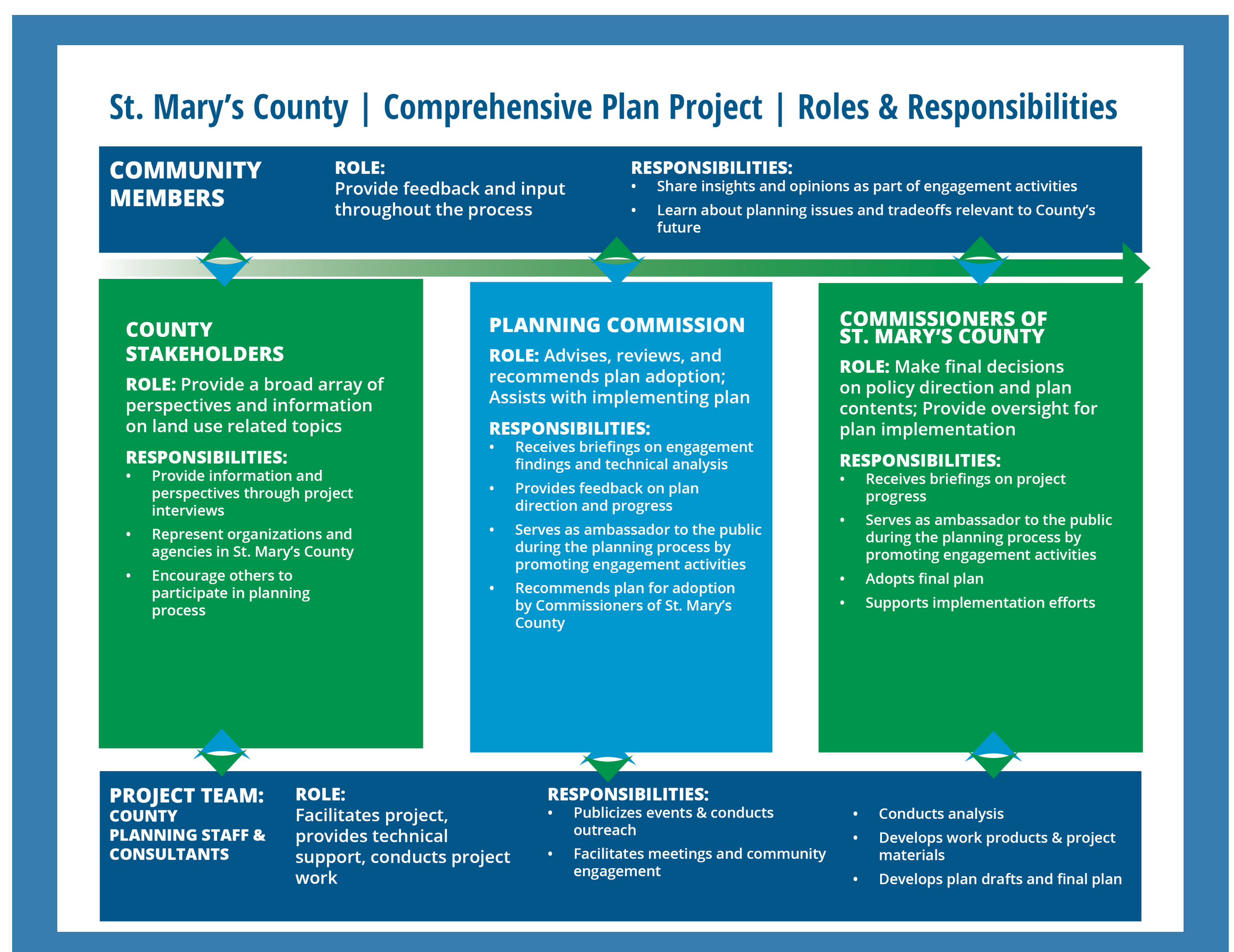
Why does St. Mary's County need a comprehensive plan?

Maryland law requires all local jurisdictions, such as St. Mary's County, to adopt a comprehensive plan. This same law also requires plan implementation through the adoption of local ordinances and regulations that govern zoning, planned development, and the subdivision of land. The comprehensive plan is an important land use tool that should reflect a shared vision of the future.

What information must be included in a comprehensive plan and how is it developed?

The law requires that all local jurisdictions include specific planning responsibilities within their plans, which are intended to guide all aspects of community planning including housing, transportation, economic development, and natural resource protection.

Among these required planning responsibilities are goals and objectives for achieving the shared vision that should be reflected in the plan.



ST. MARY'S 2050
CHARTING OUR TOMORROW
WWW.STMARYSCOUNTYMD.GOV/STMARYS2050

2

ABOUT THE CURRENTLY ADOPTED COMPREHENSIVE PLAN

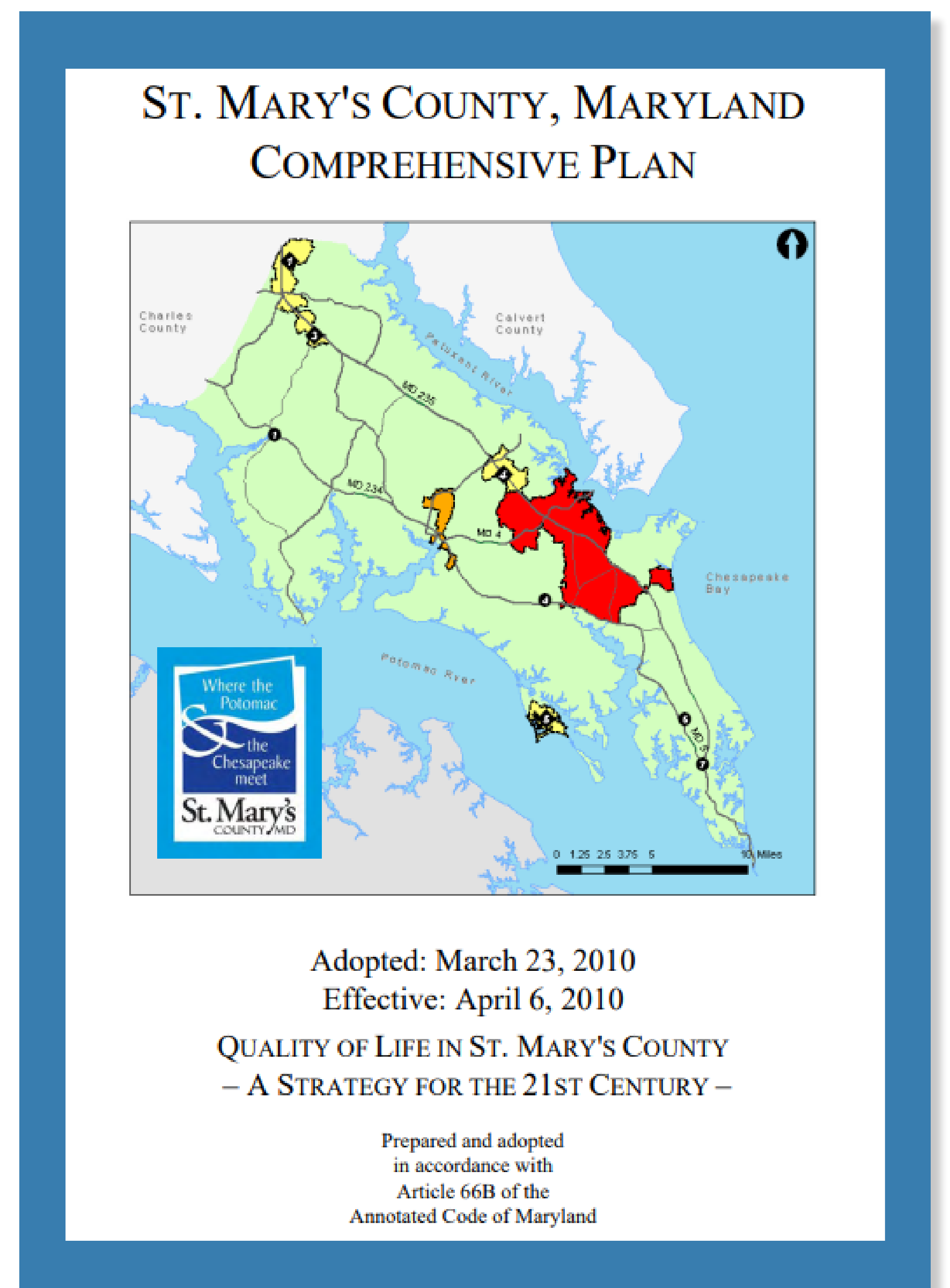
In 2010, the Commissioners of St. Mary's County adopted the Comprehensive Plan. This document has served as a growth and conservation strategy for the last 15 years. It has guided the County as it makes land use decisions within its borders.

Components of 2010 Comprehensive Plan

The 2010 Comprehensive Plan includes 12 chapters:

1. Trends
2. Successes and Challenges
3. Vision and Strategy
4. Growth Management
5. Resource Protection
6. Priority Preservation Areas
7. Water Resources
8. Housing
9. Economic Development
10. Community Facilities
11. Transportation
12. Human Services

Go to the "Resources" page on the project website (accessed via the QR code) to find the currently adopted Comprehensive Plan.



The currently adopted Comprehensive Plan is the starting point for developing the new plan. The vision, goals, objectives, and policies in the adopted plan will be re-evaluated. Land use planning areas will also be assessed to identify any needed changes to:

- Growth Areas,
- Rural Areas, and
- Protected Areas.



ST. MARY'S 2050
CHARTING OUR TOMORROW
WWW.STMARYSCOUNTYMD.GOV/STMARYS2050

3

ABOUT THE PROJECT

What is “St. Mary’s 2050: Charting Our Tomorrow”?

St. Mary’s County has launched a once-in-a-generation effort to plan for the future of the County. Led by community feedback, the St. Mary’s County 2050 Comprehensive Plan will reflect a shared vision and guide future land use decisions that shape our community for the next 25 years.

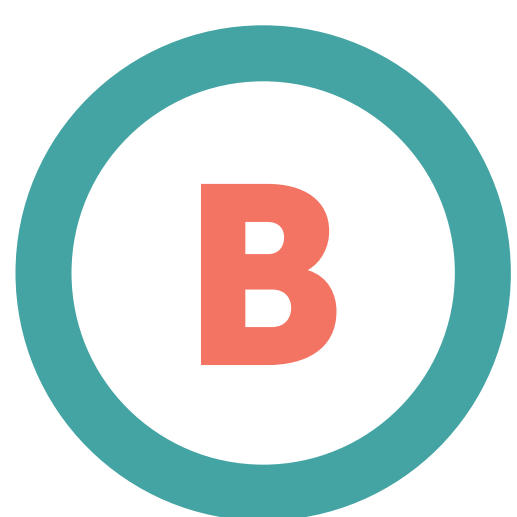
What is the project timeline?



How can I participate? Please choose one of the following:



Use the QR code to access the Project Website and stay informed.



Share the QR code with others in the community to get them engaged.



ST. MARY'S 2050
CHARTING OUR TOMORROW
WWW.STMARYSCOUNTYMD.GOV/STMARYS2050