

Myrtle Point Park Updates

January 2025

ST. MARY'S
COUNTY



RECREATION
& PARKS



Project Status

Award for Design and Engineering to Maginniss and del Ninno Architects in December 2023.

- Kick off meeting held January 2024.
- Preliminary design in progress.
- Additional funding requested for construction through FY26 Capital Project Budget



Master Plan

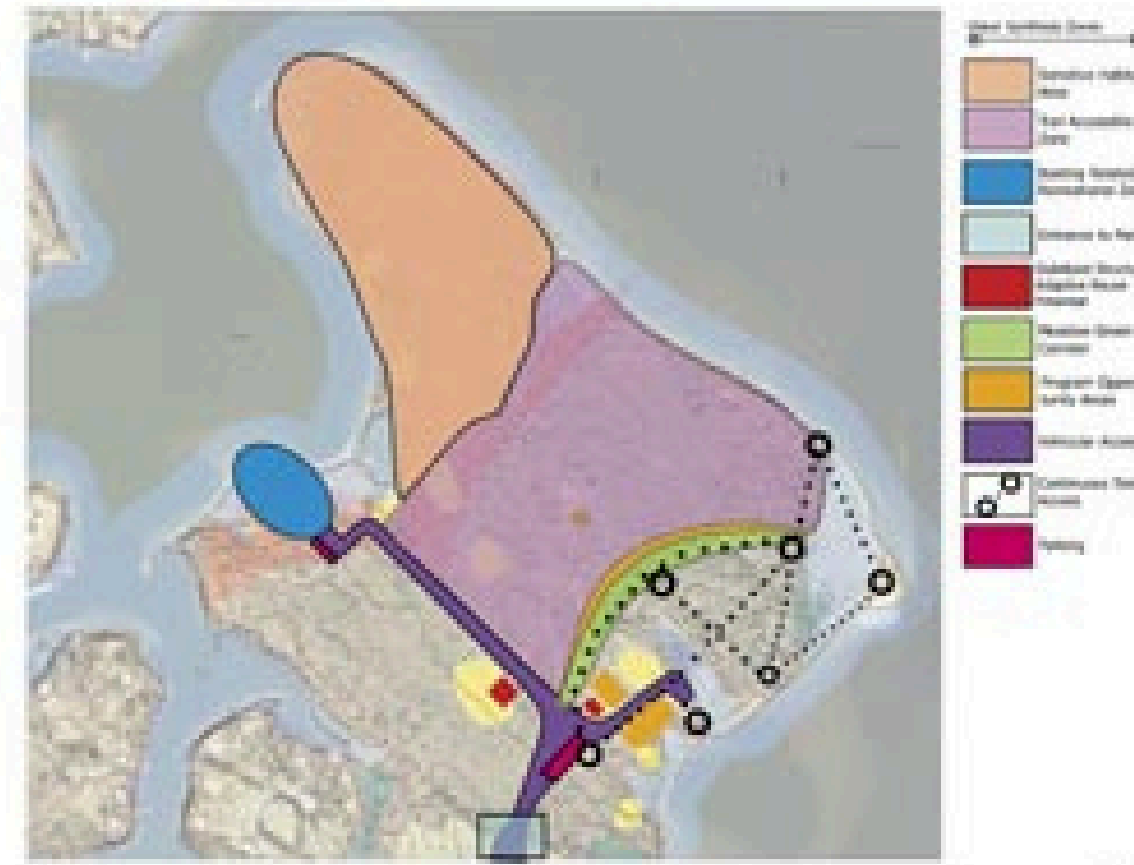


LEGEND

- ⓐ Entrance
- ⓑ Handicap Access: Road and Trail
- ⓒ Stabilized Grass for Overflow Parking
- ⓓ Gravel Visitors Parking Lot
- ⓔ Canoe/Kayak Access Road Gate
- ⓕ Barn Restoration/Interpretive Facility
- ⓖ Handicap Parking
- ⓗ Picnic Areas
- ⓘ Amphitheater
- ⓙ Handicap Accessible Trail
- ⓚ Native Wildflower Meadow
- ⓛ Visitors Center
- ⓜ Canoe/Kayak Access Parking
- Ⓨ Open Air Pavilion and "Green" Rest rooms
- ⓞ Canoe/Kayak Launch
- ⓐ Trail
- ⓑ Beach Access
- ⓒ Habitat and Demonstration/Propagation Area
- ⓓ Existing Tower to be Removed
- ⓔ Overlooks



VISION WORKSHOP ANALYSIS

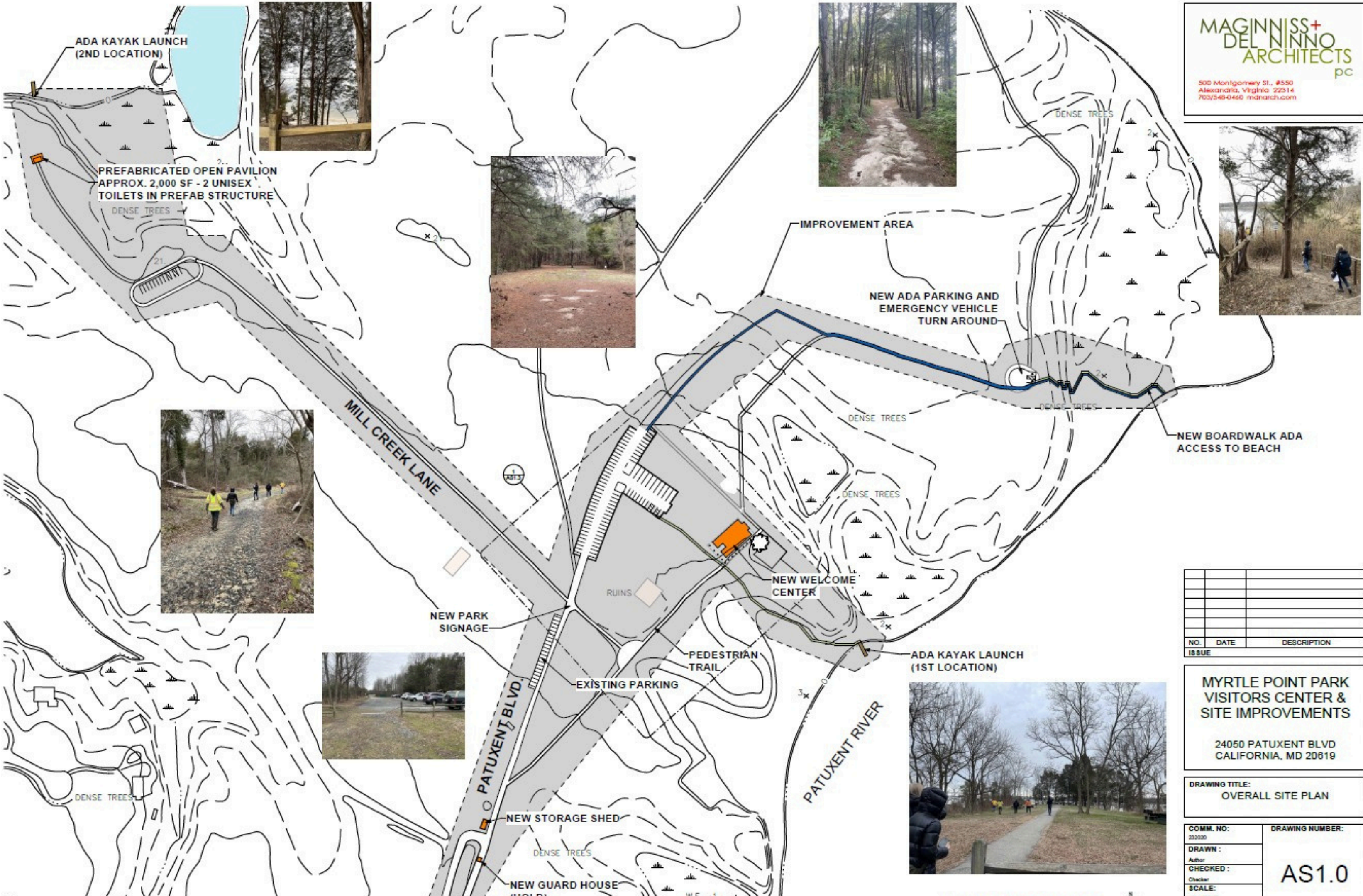


VISION WORKSHOP SYNTHESIS

Planned Improvements

Entrance
Roadways
Parking areas
ADA access to beach

Kayak launch areas
Restrooms
Pavilions
Visitors Center



NO.	DATE	DESCRIPTION

**MYRTLE POINT PARK
VISITORS CENTER &
SITE IMPROVEMENTS**

24050 PATUXENT BLVD
CALIFORNIA, MD 20819

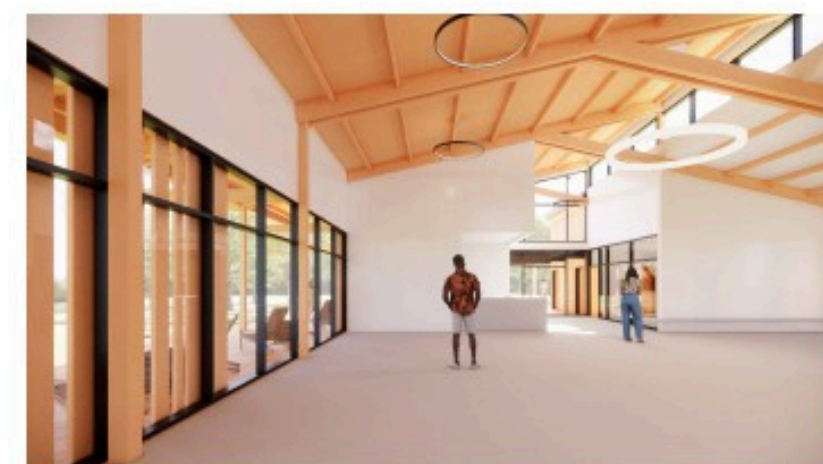
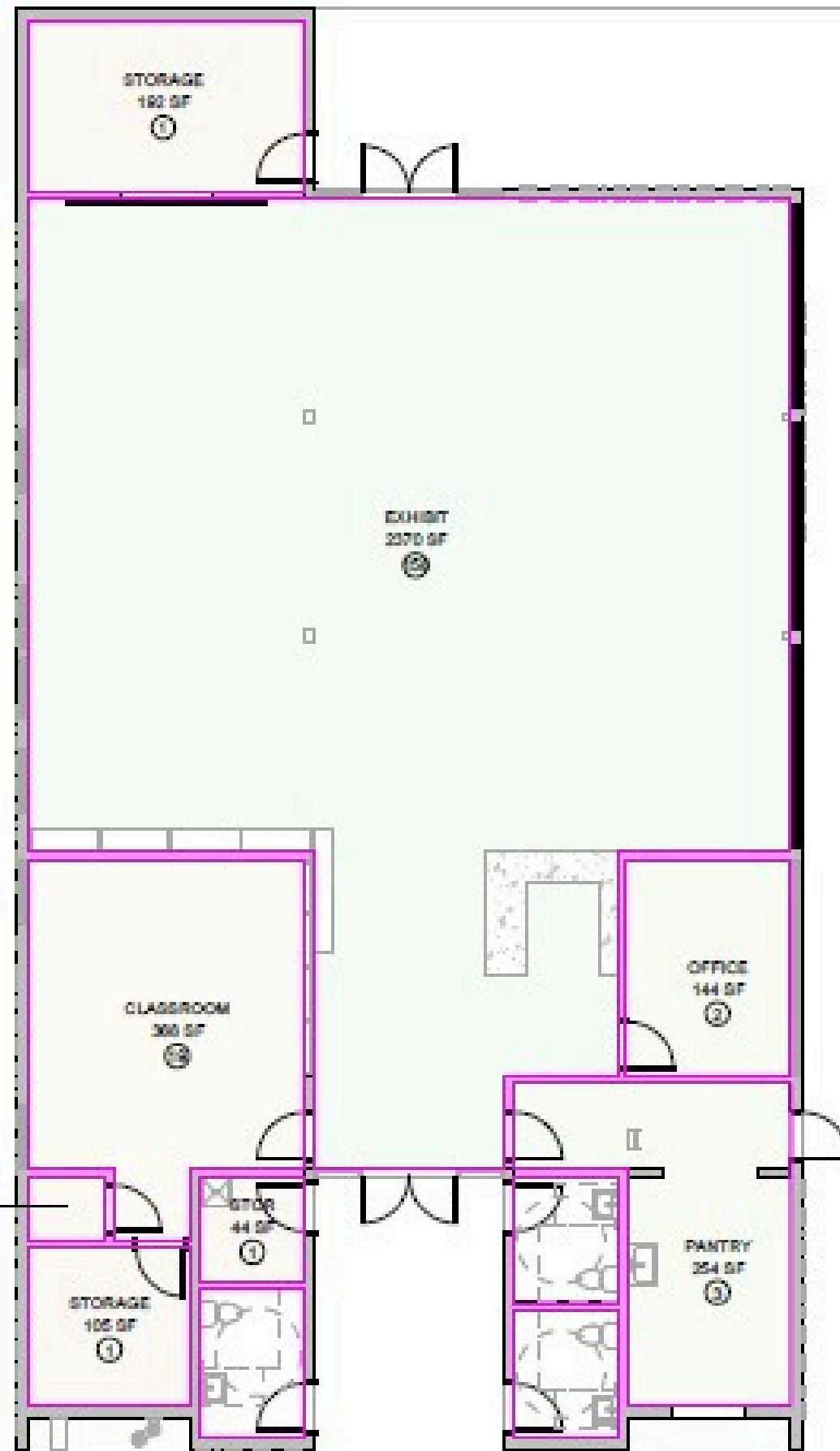
DRAWING TITLE:
OVERALL SITE PLAN

COMM. NO: 232020	DRAWING NUMBER: AS1.0
DRAWN:	
CHECKED:	
SCALE:	

Improvement concept

VISITORS CENTER

Available for Reservations





For more information contact:
Christina Bishop, Project Manager
301-475-4200 x1811 or
Christina.bishop@stmarysmd.gov