



**St. Mary's County
Planning Commission Meeting
October 7, 2024**

Comprehensive Plan Update

Agenda

- Introduction of Consultant Team and Roles
- About the Comprehensive Plan
- Overview of Process
- Public Engagement Strategy
- Planning Commission Feedback
- Questions

THE CLARION TEAM



LEIGH ANNE KING, AICP

DIRECTOR AND PROJECT MANAGER



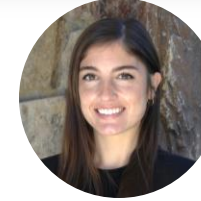
GORDY MOORE

PROJECT COORDINATOR



CHRISTIAN SCHMIDT, AICP

PROJECT PLANNER



ADDIE SHERMAN

PLAN GRAPHICS



ANGELINE CROWDER, AICP

SECTION MANAGER, LAND USE PLANNER,
LOCAL GOVERNMENT COORDINATOR



WILL TUCKER, AICP

SENIOR LAND USE
PLANNER



SARAH LOTHMAN, PE PMP

PROJECT MANAGER



JULIE RATCLIFFE

PUBLIC INVOLVEMENT
SPECIALIST



WILL ALLEN

ENVIRONMENTAL RESILIENCY
AND WORKING LANDS PLANNING



JAMIE CHRISTENSEN

ENVIRONMENTAL RESILIENCY
AND WORKING LANDS PLANNING

CLARION

**BURNS
MEDONNELL**



Team Roles

CLARION



- **Project Management**
- **Meeting Facilitation**
- **Public Engagement**
- **Technical Analyses**
sociodemographics, land use and character, economic development, historic and cultural heritage
- **Policy & Plan Development**
land use, economic development/tourism, housing

BURNS MEDONNELL



- **Technical Analyses**
current and future transportation system, public facilities and services
- **Policy & Plan Development**
transportation and infrastructure policies, strategies, and actions with a focus on the linkage to land use
- **Public Engagement Assistance**



- **Technical Analyses**
environmental conditions, current sustainability policies and initiatives, areas of critical state concern, agricultural lands
- **Plan Development**
conservation of environmental lands, rural open spaces, and working lands, community vulnerability to climate and non-climate related hazards with a focus on linkage to land use

Comprehensive Plan Update

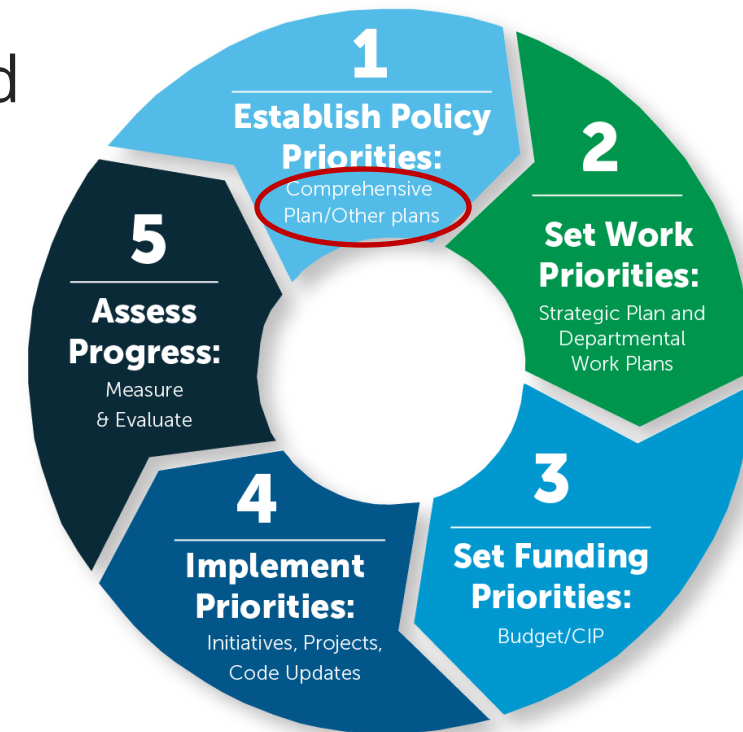


ST. MARY'S 2050 CHARTING OUR TOMORROW

*Updating the St. Mary's County
Comprehensive Plan (2010)*

About the Comprehensive Plan

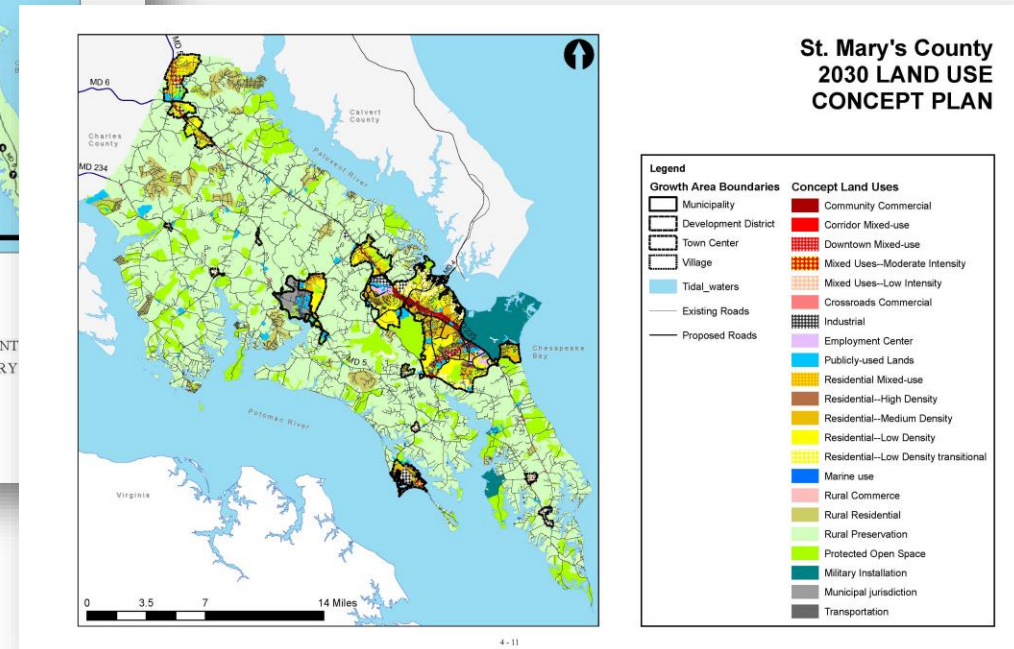
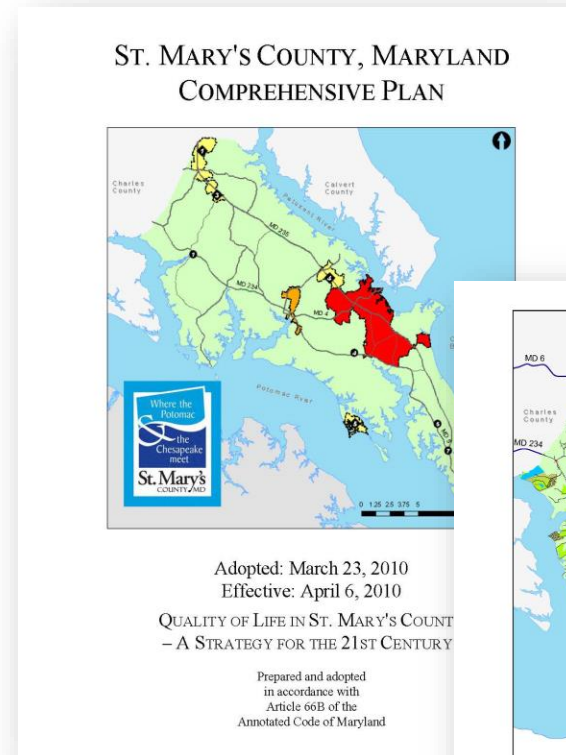
- Required per Title 3 of the Land Use Article
- Long-range (20+ years) **policy guidance** focused on physical planning (land use, conservation, infrastructure)
- **Built from inclusive public engagement**
- **Guide to direct growth and support preservation efforts**
- **Implemented** through updates to Comprehensive Zoning Ordinance
- Updated every 10 years



Community Planning Cycle

Currently Adopted Comprehensive Plan

- Trends
- Successes and Challenges
- Vision and Strategy
- Growth Management Element
- Resource Protection Element
- Priority Preservation Areas Element
- Water Resources Element
- Housing Element
- Economic Development Element
- Community Facilities Element
- Transportation Element
- Human Services Element



Project Timeline



Community Engagement Strategy



Community Engagement Strategy



Community
Engagement
Team



Roles and Responsibilities

COMMUNITY MEMBERS

ROLE:
Provide feedback and input throughout the process

- RESPONSIBILITIES:**
- Share insights and opinions as part of engagement activities
 - Learn about planning issues and tradeoffs relevant to County's future

COUNTY STAKEHOLDERS

ROLE: Provide a broad array of perspectives and information on land use related topics

- RESPONSIBILITIES:**
- Provide information and perspectives through project interviews
 - Represent organizations and agencies in St. Mary's County
 - Encourage others to participate in planning process

PLANNING COMMISSION

ROLE: Advises, reviews, and recommends plan adoption; Assists with implementing plan

- RESPONSIBILITIES:**
- Receives briefings on engagement findings and technical analysis
 - Provides feedback on plan direction and progress
 - Serves as ambassador to the public during the planning process by promoting engagement activities
 - Recommends plan for adoption by Commissioners of St. Mary's County

COMMISSIONERS OF ST. MARY'S COUNTY

ROLE: Make final decisions on policy direction and plan contents; Provide oversight for plan implementation

- RESPONSIBILITIES:**
- Receives briefings on project progress
 - Serves as ambassador to the public during the planning process by promoting engagement activities
 - Adopts final plan
 - Supports implementation efforts

PROJECT TEAM: COUNTY PLANNING STAFF & CONSULTANTS

ROLE:
Facilitates project, provides technical support, conducts project work

- RESPONSIBILITIES:**
- Publicizes events & conducts outreach
 - Facilitates meetings and community engagement

- Conducts analysis
- Develops work products & project materials
- Develops plan drafts and final plan

Project Approach Feedback

Discussion Topic: What objectives do you want to ensure are accomplished during this project?

- *Aspects of public engagement events and activities?*
- *Specific community issues to be addressed?*
- *Potential outcomes of the Plan?*
- *Particular components of the Plan?*

Big Opportunities

Discussion Topic: What are the big opportunities that St. Mary's County should be considering through the plan update?

- *Enhancing quality of life?*
- *Preservation?*
- *Economic Development?*
- *Tourism?*
- *Infrastructure?*
- *Other?*



Questions?