

# Snow Hill Park Updates

January 2025

ST. MARY'S  
COUNTY

RECREATION  
& PARKS



# Project History and Status

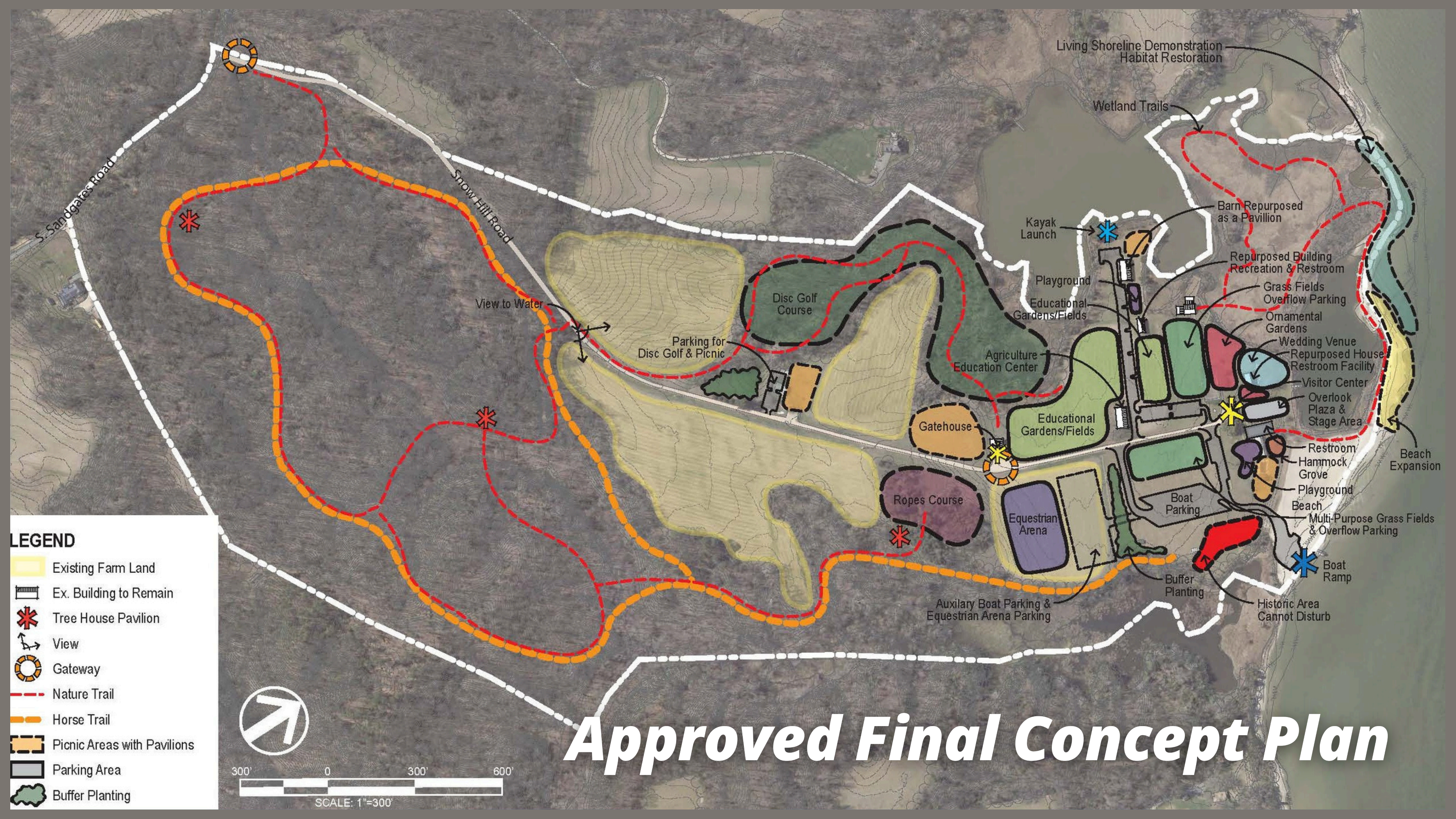
- 163 acres on the Patuxent River, purchased in March 2017 with the use of REPI funding through the Navy and Maryland Program Open Space.
- The Park is envisioned to include, but not limited to beach access, hiking and nature trails, forested/conservation areas and nature interpretation, fishing, canoeing, and kayaking, motorized boat ramp and pier, picnic areas, playground, parking, and restrooms.
- Master Plan was adopted by the CSMC on September 12, 2023.
- A contract was awarded to A Morton Thomas on April 19, 2021, to provide Architect and engineering services for a kayak launch on Roslin Creek, Boat Launch area on the Patuxent River and associated parking areas and entrance road.
- Entrance Improvement design plans submitted for construction permitting on December 17, 2024.
- Critical Area Commission meetings: project subcommittee meeting is January 15, 2025, and the following full Commission Meeting is January 29, 2025.
- Complete project is estimated to be out for bid in Spring 2025.





**Recreation and Parks will maintain the natural beauty and environmental health of this spectacular waterfront park.**





Living Shoreline Demonstration Habitat Restoration

Wetland Trails

Barn Repurposed as a Pavilion

Repurposed Building Recreation & Restroom

Grass Fields Overflow Parking

Ornamental Gardens

Wedding Venue

Repurposed House Restroom Facility

Visitor Center

Overlook Plaza & Stage Area

Beach Expansion

Restroom

Hammock Grove

Playground

Multi-Purpose Grass Fields & Overflow Parking

Boat Ramp

Historic Area Cannot Disturb

Kayak Launch

Playground

Educational Gardens/Fields

Agriculture Education Center

Educational Gardens/Fields

Gatehouse

Ropes Course

Equestrian Arena

Boat Parking

Buffer Planting

Auxiliary Boat Parking & Equestrian Arena Parking

Disc Golf Course

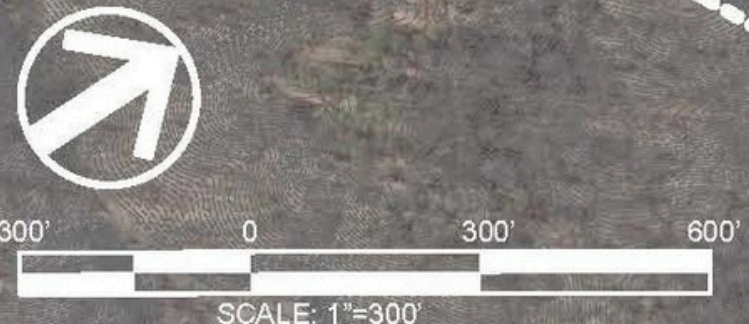
Parking for Disc Golf & Picnic

View to Water

Snow Hill Road

S. Sandgates Road

- LEGEND**
- Existing Farm Land
  - Ex. Building to Remain
  - Tree House Pavilion
  - View
  - Gateway
  - Nature Trail
  - Horse Trail
  - Picnic Areas with Pavilions
  - Parking Area
  - Buffer Planting



# Approved Final Concept Plan



# Entrance Improvements

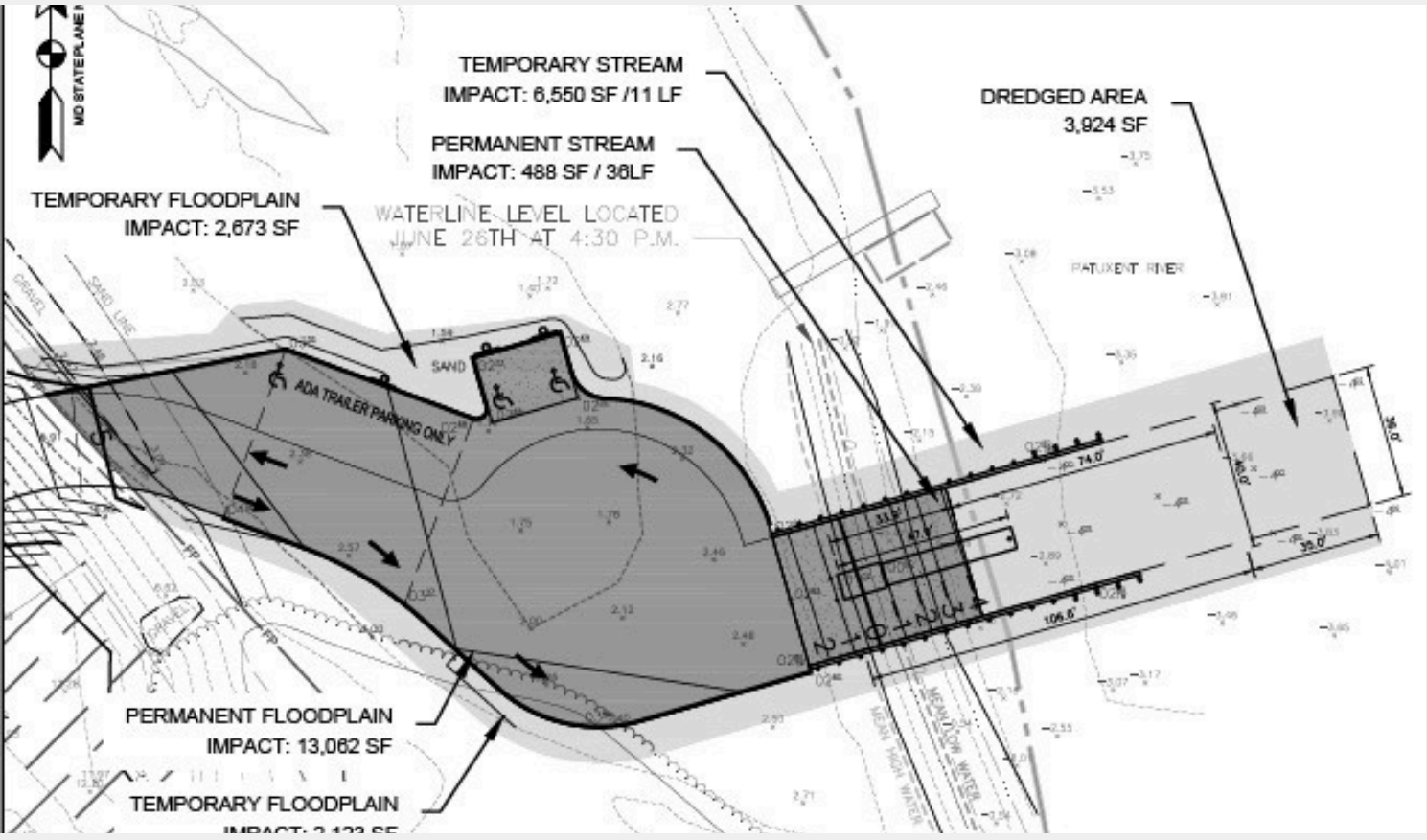
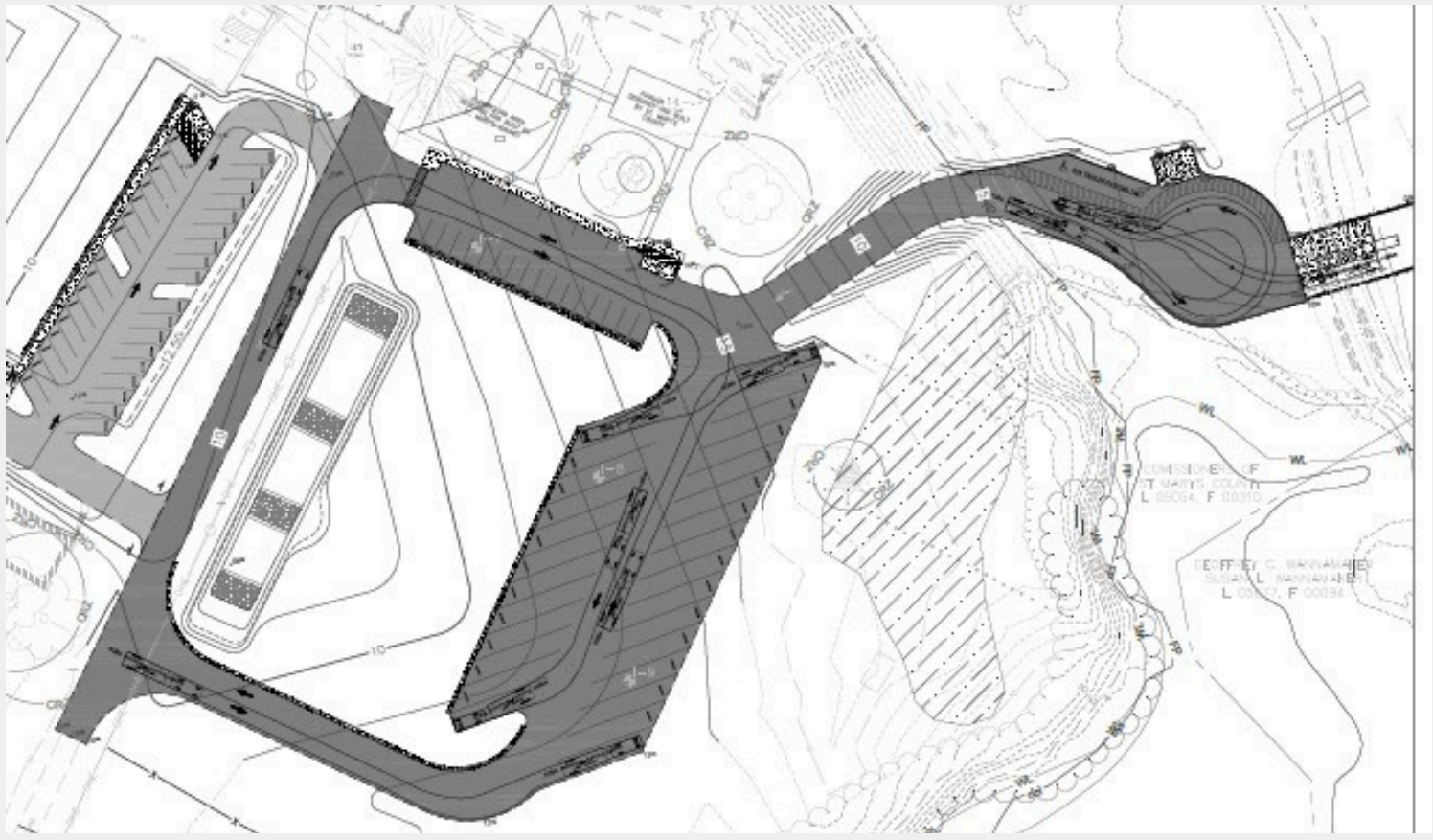
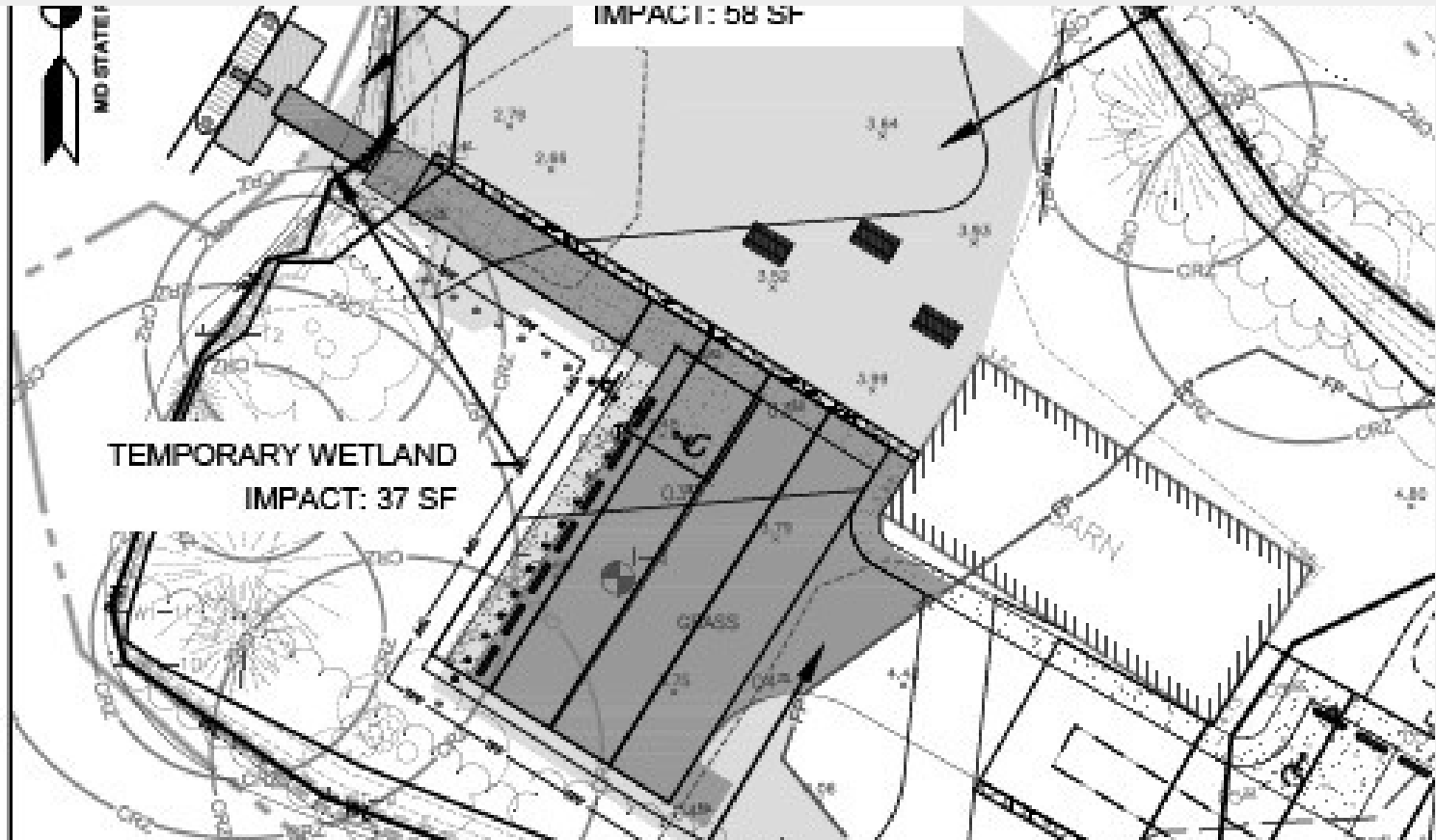
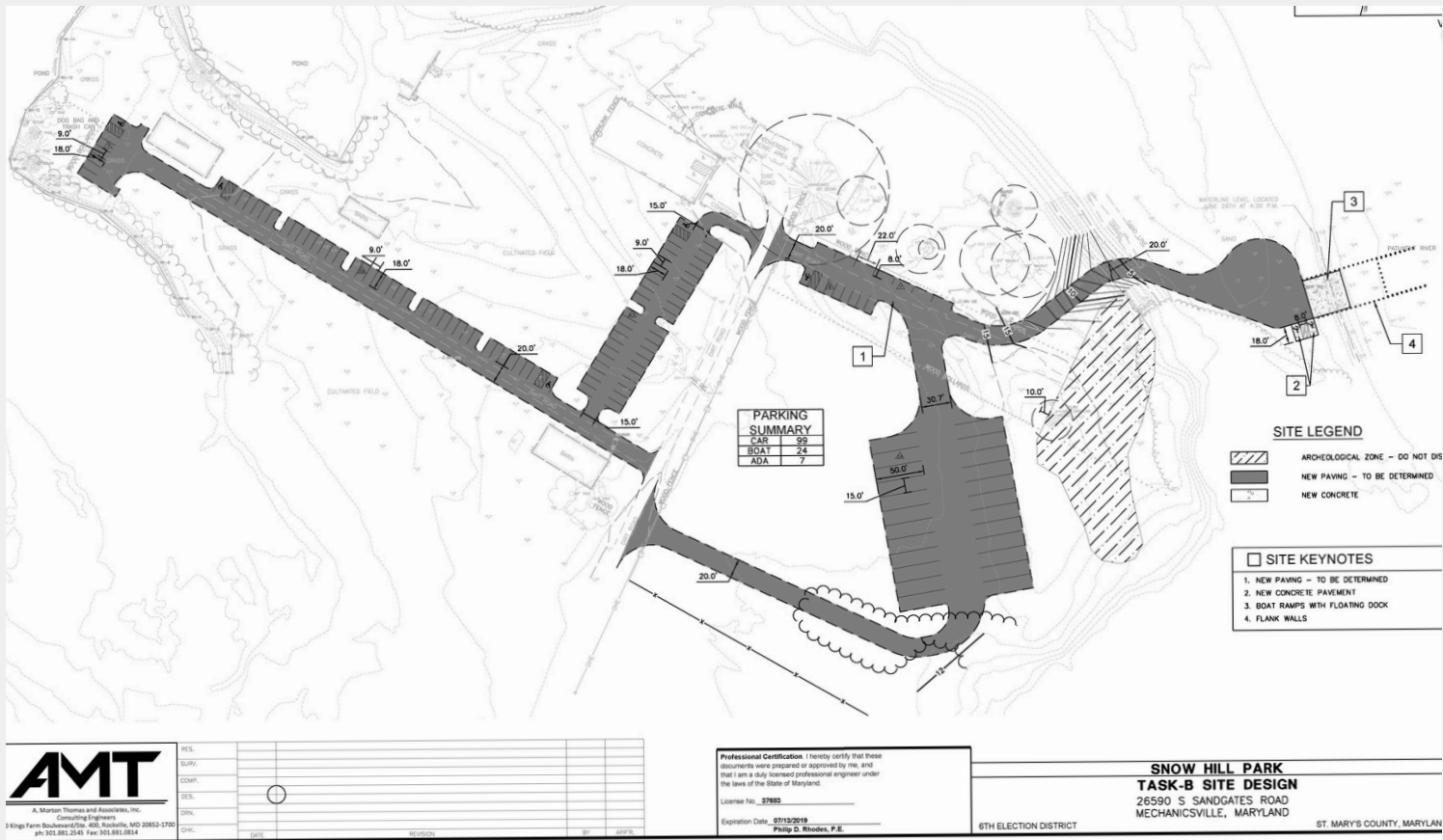


## Line of sight and road improvements under design review.

- Design and engineering of the entrance and park road improvements have been submitted for permits.
- Plan for excavation of hill and installation of retaining wall to improve line of sight for left hand turning out of the park.
- Road improvements will allow for safe travel, passing of vehicles and eliminate road washing out during storms.



# Snow Hill- Boat & Kayak Launch





# 2024 Improvements

- **Demolition of Manor House, concrete pathways, old pavilion, boat house and other items**
- **New Playground Installed**
- **New Pavilion Installed**
- **Two Hammock Groves installed**







# Manor House Demo

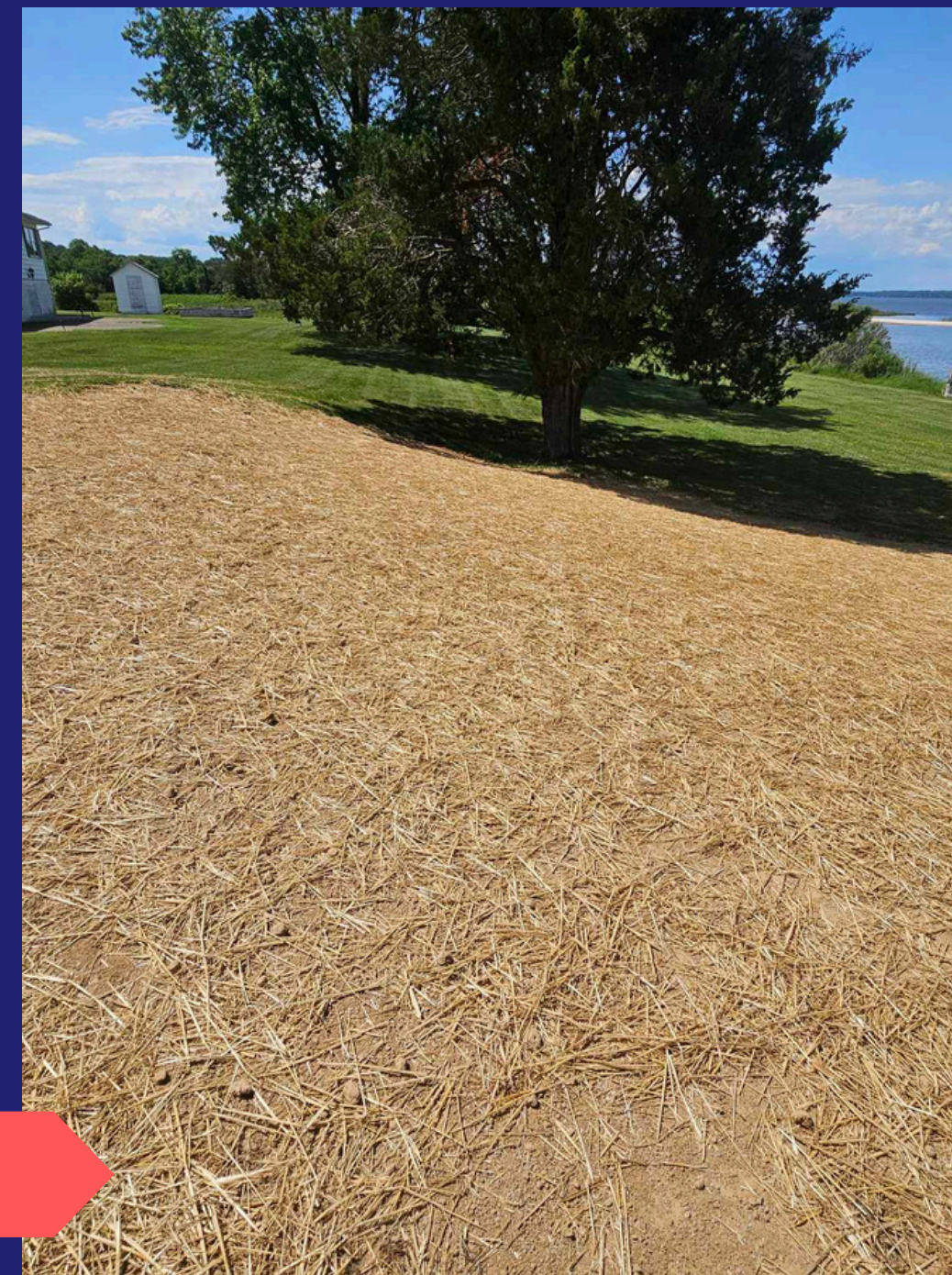
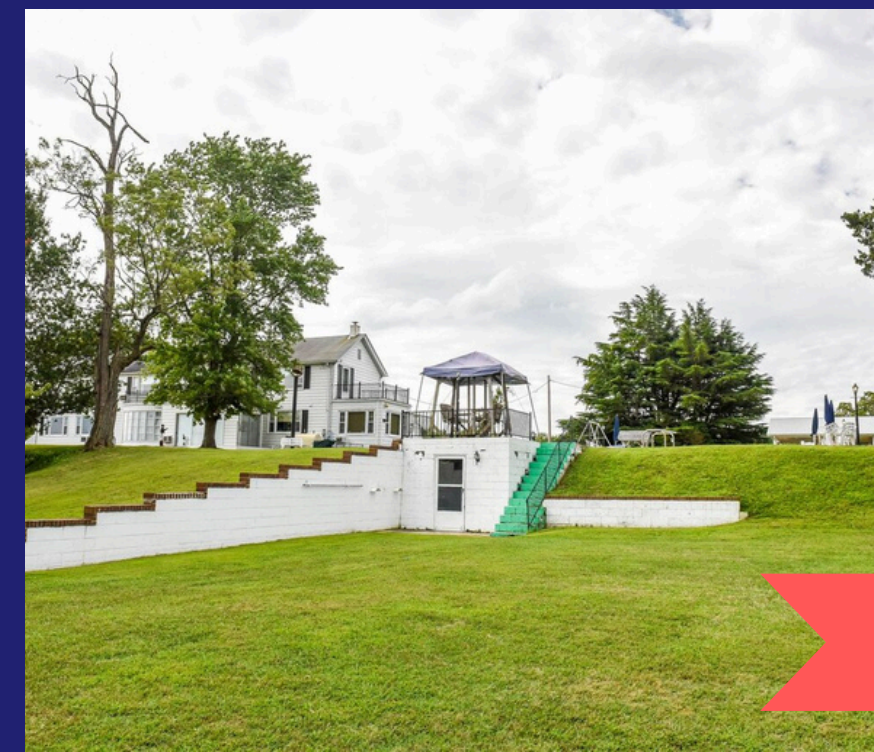
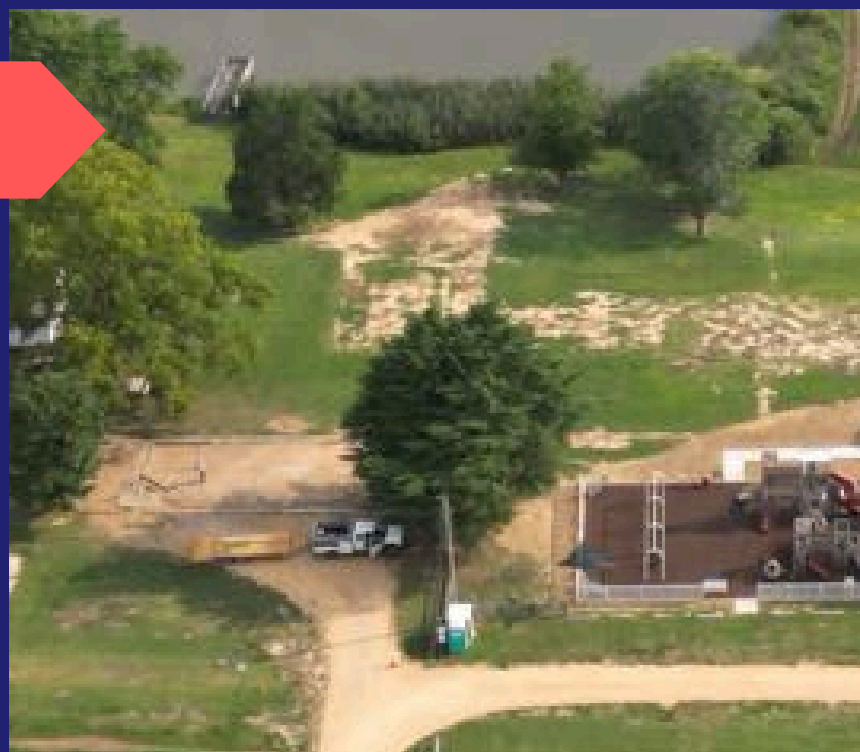






# Other Demolition

Damaged Boathouse, Old Pavilion,  
Sidewalks, Retaining wall







# New Playground & Pavilion







# Hammock Groves

- Large 6 person grove by playground
- Small 3 person grove down the hill/ shaded





# More To Come!

- Bathrooms
- Trails
- Disc Golf
- Gardens
- Living Shoreline
- Wetland trails
- Equestrian Trails

CHECK OUT



For more information contact:  
Christina Bishop, Project Manager  
301-475-4200 x1811 or  
Christina.bishop@stmarysmd.gov

